

# PRESOTTO

## MADIA HUG/ HUG SIDEBOARD

design: **Pierangelo Sciuoto**



### INFORMAZIONI TECNICHE

Struttura e frontali sp.20 mm realizzati in pannelli di particelle impiallacciate. Frontali battenti centrali sono disponibili con apertura con prensilità con gola superiore e frontali laterali apribili a 180°. Comprensiva di 4 ripiani in vetro.

/TECHNICAL INFO

Structure and fronts 20 mm-thk., made of veneered particle board.

Center hinged fronts are available with prehung opening with top groove and side fronts that can be opened 180°. Including 4 glass shelves.

P

### FINITURE

Struttura e frontali disponibili in Laccato opaco o lucido. Basamento e gola in Metal Standard.

/FINISHES

Frame and fronts available in Matt or Glossy Lacquered. Base and throat handle in Metal Standard.

### ACCESSORI

-kit led per fondo madia (3000°K), completo di trasformatore e cablaggio

-disponibile solo nella versione monofacciale

-Indicare sempre: voltaggio 220V con spina EU o UK  
voltaggio 110V con spina USA

/OPTIONAL

-led kit for cupboard bottom (3000°K), complete with transformer and wiring harness

-Available only in single-sided version

-Always indicate: 220V voltage with EU or UK plug  
110V voltage with US plug

### DIMENSIONI

/SIZE

L 1851 / W 72 7/8"

P 515 / D 20 1/4"

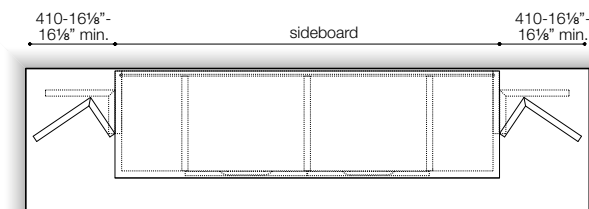
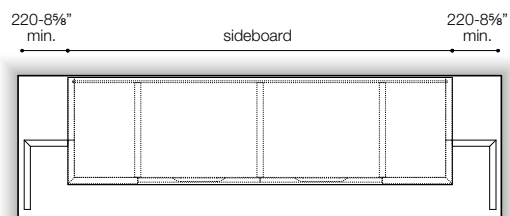
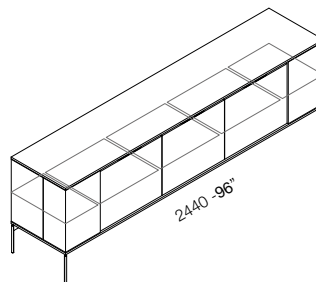
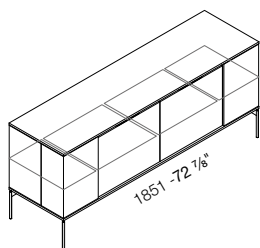
H 785 / H 30 7/8"

L 2440 / W 96"

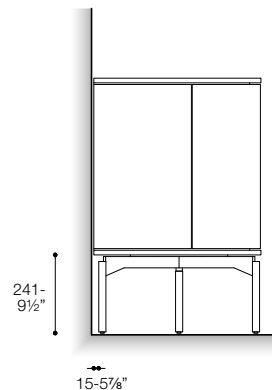
P 515 / D 20 1/4"

H 785 / H 30 7/8"

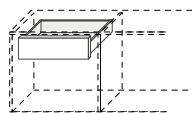
# PRESOTTO



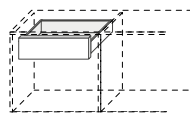
La base della credenza HUG è posizionata con una rientranza sul retro per passare sopra il battiscopa. /The base of the HUG sideboard is positioned with an indentation on the back to pass over the skirting board



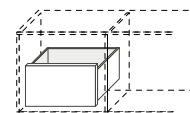
P



**cassetto interno legno con distanziatori laterali**  
/internal wooden drawer with side spacers



**cassetto interno in alluminio**  
/internal aluminium drawer



**cassetto portabottiglie, struttura in alluminio con separatori** /bottle holder drawer with aluminium structure with dividers