

Reece

Balancing Japandi Design with a Circular Ethos, **Reece** is where minimalist style meets sustainability. With a focus on product lifecycle and sustainable materials, **Reece** offers some of the most environmentally responsible options in our product portfolio.

Components are designed for disassembly, promoting easy separation for repair and updates, and ensuring 100% recyclability at the end of life. Paired with sustainable material choices including Bamboo, Recycled Plastic, and AFB, and characterised by its minimalistic design, **Reece** stands as the epitome of sustainable sofa ranges.




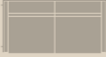
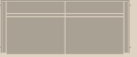


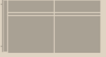
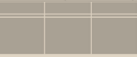


Sustainable choices.

Reece fully upholstered frames are now made using AFB (Agricultural Fibre Board), a natural, continuously renewable by-product of the agricultural industry.

Made with straw and reeds, AFB utilises left-over materials which would otherwise be disposed of by composting or burning. Both disposal processes release any CO2 the plants have absorbed throughout their growth into the atmosphere, partially undoing any positive environmental effects the crops have on our planet.

Instead, by repurposing these byproducts the carbon absorbed during their growth is stored and the environmental implications are negated.

							
Product Code	Armchair REC-01-xx	Two Seat REC-02-xx	Large Two Seat REC-03-xx	Corner Unit REC-04-xx	Single Seat w. One Arm Right: REC-05a-xx Left: REC-05b-xx	Two Seat w. One Arm Right: REC-06a-xx Left: REC-06b-xx	Three Seat w. One Arm Right: REC-07a-xx Left: REC-07b-xx
Dimensions	H820 x W975 x D900 x SH420mm	H820 x W1725 x D900 x SH420mm	H820 x W2125 x D900 x SH420mm	H820 x W900 x D900 x SH420mm	H820 x W865 x D900 x SH420mm	H820 x W1615 x D900 x SH420mm	H820 x W2365 x D900 x SH420mm

Replace xx with material code when ordering.

Finishes on next page.

One Arm units must be used in combination with a Corner or another One Arm unit (Ends cannot be left open). Linking kits are supplied. Illustrations show Right arm versions.

Bespoke units with no arms can be produced on request to allow for the creation of 'U' shape layouts. Speak to us for details & pricing.

FINISHES

METAL POWDER COAT COLOURS:

					
Wine Red RAL 3005	Ruby Red RAL 3003	Beige Red RAL 3012	Broom Yellow RAL 1032	Zinc Yellow RAL 1018	Oyster White RAL 1013
					
Steel Blue RAL 5011	Sapphire Blue RAL 5003	Pigeon Blue RAL 5014	Blue Grey RAL 7031	Signal White RAL 9003	Pebble Grey RAL 7032
					
Grey Beige RAL 1019	Yellow Grey RAL 7034	Fir Green RAL 6009	Moss Green RAL 6005	Reseda Green RAL 6011	Cement Grey RAL 7033
					
Light Grey RAL 7035	Graphite Grey RAL 7024	Jet Black RAL 9005	Quartz PREMIUM	Golden Brown PREMIUM	Rust Mica PREMIUM

On small orders a minimum charge may apply.

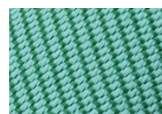


Metal Legs

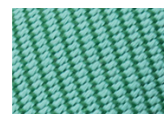


Castors available.
Black or White
Armchair/Corner +£256
Two/Three Seat +£384

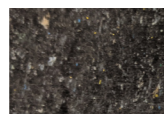
PANEL FINISH
Replace xx with code
when ordering.



Upholstered
Code: UPH



Upholstered
Recycled Plastic
Code: UPH-RP



Recycled
Plastic
Code: RP



Birch Plywood
Code: P



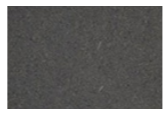
Natural Bamboo
Code: NB



Caramel Bamboo
Code: CB



Grey Valchromat
Code: GV



Black Valchromat
Code: BV

POWER



Power modules available.

TABLES



For Side Tables and
Drop-in Desks see next page.



Frames can be constructed using 100% Recycled Plastic panels, helping to divert waste from landfill.

Used as an exposed surface, the recycled board has a raw, honest quality, with a speckled surface and rough hewn edges. Surface scratches & blemishes may be apparent in the surfaces and will wear with time, consistent with the 'un-polished' nature of this humble material.

Alternatively, the recycled frame can be fully upholstered, giving the luxurious appearance of a fully upholstered sofa with strong eco-credentials.

When Recycled Plastic is used the range has a **recycled content of over 83%** and remains **100% recyclable**.

Reece

Side Tables & Drop-in Desks



Reece Side Tables & Drop-in Desks



							
	Side Table	Drop-in Desk for Armchair	Drop-in Desk for Two Seat	Drop-in Desk for Large Two Seat	Drop-in Desk for Single Seat w. One Arm	Drop-in Desk for Two Seat w. One Arm	Drop-in Desk for Three Seat w. One Arm
Product Code	Right: REC-ST-xx-R Left: REC-ST-xx-L	REC-DD-01-xx	REC-DD-02-xx	REC-DD-03-xx	REC-DD-05-xx	REC-DD-06-xx	REC-DD-07-xx
Dimensions	H820 x Ø300mm	H725 x W875 x D350mm	H725 x W1615 x D350mm	H725 x W2025 x D350mm	H725 x W780 x D350mm	H725 x W1520 x D350mm	H725 x W2260 x D350mm

TOP FINISH
Replace xx with code when ordering.



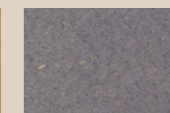
Birch Plywood
Code: P



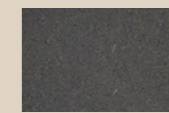
Natural Bamboo
Code: NB



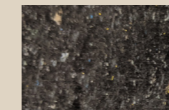
Caramel Bamboo
Code: CB



Grey Valchromat
Code: GV



Black Valchromat
Code: BV



Recycled Plastic
Code: RP

NOTE

Side Tables can only be added to low back units.

Drop-in Desks can be added to low back and Fully Upholstered high back sofas.


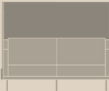
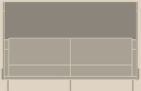
Reece High Back



Reece
High Back



Fully Upholstered

			
	Armchair	Two Seat	Large Two Seat
Product Code	REC-01-UPHB	REC-02-UPHB	REC-03-UPHB
Dimensions	H1365 x W975 x D900 x SH420mm	H1365 x W1725 x D900 x SH420mm	H1365 x W2125 x D900 x SH420mm

Perfect for open-plan spaces, Reece High Back offers a pared-back, comfortable seating option for areas requiring an extra level of visual and acoustic privacy.

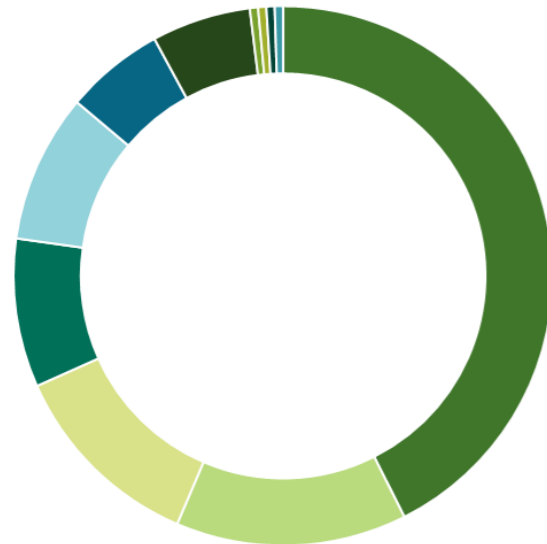
sixteen3

PRODUCT MATERIAL BREAKDOWN

Material Breakdown Data based on **Reece** Archair in Exposed Recycled Plastic with Side Table REC-01-E-RP & REC-ST-RP-R, upholstered in Camira Oceanic.

Figures stated will vary depending on model purchased and specification changes.

Recycled data based on supplier information and industry averages. As part of our continuous development processes we will review this information regularly and data may change without notice.

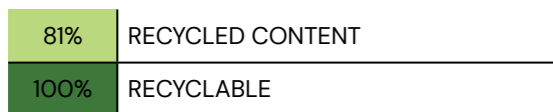


43%	RECYCLED PLASTIC
14%	MR MDF
12%	MILD STEEL
9%	POLYURETHANE FOAM
9%	RECON FOAM
6%	POLYESTER FIBRE
6%	FABRIC
<1%	ZINC PLATED MILD STEEL
<1%	POLYPROPYLENE
<1%	LDPE
<1%	STAINLESS STEEL

TOTAL WEIGHT: 59kg

110.26 KG CO2e
 *calculations are based on average emission factors validated by third-party open data sources based on cradle-to-gate phases of typical product lifecycle.

SUSTAINABILITY



This product has been designed using high quality materials and craftsmanship to ensure it's longevity, however at the end of this products life it can be returned to **sixteen3** for refurbishment or recycling.

For FSC® Chain of Custody specify when ordering.



Certificate Number 14506



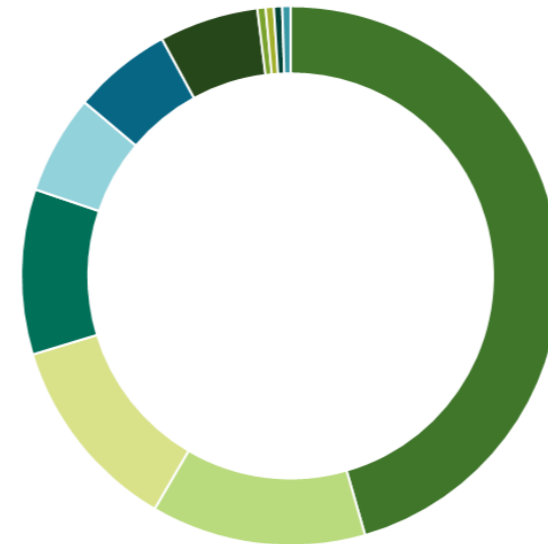
Full Membership Certificate No. 173

PRODUCT MATERIAL BREAKDOWN

Material Breakdown Data based on **Reece** Two Seat High Back - Fully Upholstered REC-02-UPHB upholstered in Camira Oceanic.

Figures stated will vary depending on model purchased and specification changes.

Recycled data based on supplier information and industry averages. As part of our continuous development processes we will review this information regularly and data may change without notice.

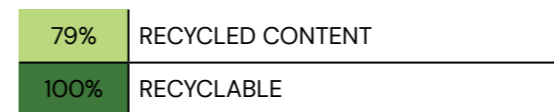


46%	AGRICULTURAL FIBRE BOARD
13%	MR MDF
12%	POLYURETHANE FOAM
9%	FABRIC
6%	RECON FOAM
6%	POLYESTER FIBRE
6%	MILD STEEL
<1%	ZINC PLATED MILD STEEL
<1%	POLYPROPYLENE
<1%	LDPE
<1%	STAINLESS STEEL

TOTAL WEIGHT: 101kg

162.07 KG CO2e
 *calculations are based on average emission factors validated by third-party open data sources based on cradle-to-gate phases of typical product lifecycle.

SUSTAINABILITY



This product has been designed using high quality materials and craftsmanship to ensure it's longevity, however at the end of this products life it can be returned to **sixteen3** for refurbishment or recycling.

For FSC® Chain of Custody specify when ordering.



Certificate Number 14506



Full Membership Certificate No. 173

Warranty Information

5 YEAR – NORMAL FAIR WEAR & TEAR

This includes the structure and any foam/padding materials.
Fabrics are covered by fabric manufacturers' warranties, usually 5 years, dependant on fabric choice.

Please refer to full **sixteen3** Warranty information document for more details.
sixteen3 ltd reserve the right to update product data information without prior notice.

Standards

FLAMABILITY

The foams & fillings of this product meet BS EN 5852: Part 2, in accordance with The Furniture and Furnishings (Fire) (Safety) Regulations 1988.

CONSTRUCTION

Designed to meet & exceed BS EN 16139: 2013 – Strength, Durability and Safety Requirements for non-domestic seating.

Cleaning & Maintenance

GENERAL MAINTENANCE

- Vacuum upholstery regularly to remove dust and grit.
- Most hard surfaces can be cleaned with a soft cloth, dampened with a small amount of water and buffed dry.
- Clean spills and stains quickly to prevent them setting in (see specific fabric care instructions below).
- If being used in a spill/stain prone area specify an appropriate finish with stain-repellent properties.

Refer to fabric manufacturers own guidelines for specific information.

NATURAL FABRICS

In addition to regular vacuuming, wool and other natural fibres can usually be cleaned using appropriate upholstery shampoo. For a deeper clean it is best that wool be dry cleaned, as over-wetting can cause shrinkage and appearance change. Never apply bleach, ammonia, alkali or strong acids to wool upholstery.

SYNTHETIC FABRICS

Vacuuming is the best regular maintenance followed by speed of action to remove spills and stains rapidly as soon as they occur. Most synthetic fabrics can be wiped down with a water soaked damp cloth without fear of damaging fibre or removing colour. Stubborn stains can be removed with a quality upholstery shampoo.

LEATHER

Leather should be regularly dusted with a soft cloth and vacuumed with a soft brush extension.
Most types of aniline can also be treated with specialist products to help preserve colour/finish etc.
As leather is a natural material, discrepancies in surface texture and 'puddling' in seat areas is to be expected.

WOOD FINISHES

Clean surfaces regularly with a slightly damp cloth and buff dry with a soft duster. The finish on all wood and laminate surfaces is designed to withstand moderate heat and some spillages, but all spillages should be wiped off with a damp cloth straight away. Do not drag any objects across any table tops. Certain wood finishes will naturally change in appearance with age. We cannot guarantee an exact match of any timber products.

RECYCLED PLASTIC

Clean surfaces regularly with a soft cloth. Surface scratches & blemishes may be apparent in the surfaces and will wear with time, consistent with the 'un-polished' nature of this humble material.

POWDER COATED & PAINTED

Clean surfaces regularly with a slightly damp cloth and a mild solution of soapy water. Buff dry with a soft duster.



CONTACT

+44 1925 850 500
info@sixteen3.co.uk
@sixteen3_ltd

HQ:
Unit 2, Westway21
Chesford Grange
Woolston, Warrington
Cheshire
WA1 4SZ

London:
25 Bastwick St
Clerkenwell
London
EC1V 3PS

Manchester:
Material Source Studio
1 Federation St
NOMA
Manchester
M4 4BF

Glasgow:
Material Source Studio
180 West George St
Glasgow
G2 2NR