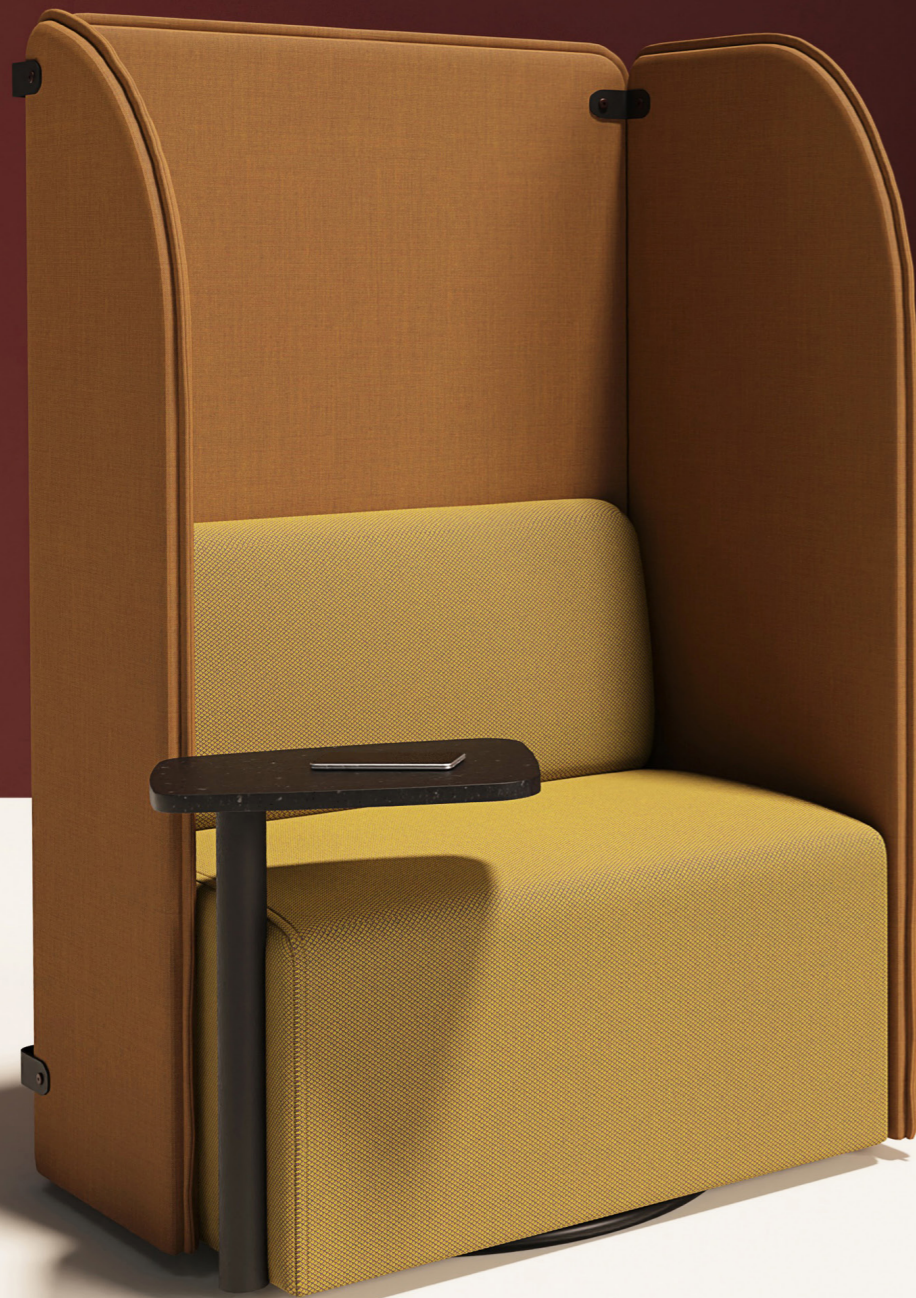


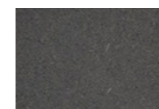
# Artus Nest

# Artus Nest



	50mm Wood Legs / Castors	Swivel Base	150mm Metal Legs
<b>Product Code</b>	Right Hand: ANS-50-R Left Hand: ANS-50-L	Right Hand: ANS-SB-R Left Hand: ANS-SB-L	Right Hand: ANS-150-R Left Hand: ANS-150-L
<b>Dimensions</b>	H1430 x W860 x D680 x SH460mm Incl. Writing Tablet: W960 x D840mm	H1430 x W860 x D680 x SH460mm Incl. Writing Tablet: W960 x D840mm	H1430 x W860 x D680 x SH460mm Incl. Writing Tablet: W960 x D840mm

## WRITING TABLET TOP:



Black Valchromat

## BRACKET & COLUMN POWDER COAT COLOURS:

Wine Red RAL 3005	Ruby Red RAL 3003	Beige Red RAL 3012	Broom Yellow RAL 1032	Zinc Yellow RAL 1018	Oyster White RAL 1013
Steel Blue RAL 5011	Sapphire Blue RAL 5003	Pigeon Blue RAL 5014	Blue Grey RAL 7031	Signal White RAL 9003	Pebble Grey RAL 7032
Grey Beige RAL 1019	Yellow Grey RAL 7034	Fir Green RAL 6009	Moss Green RAL 6005	Reseda Green RAL 6011	Cement Grey RAL 7033
Light Grey RAL 7035	Graphite Grey RAL 7024	Jet Black RAL 9005	Quartz PREMIUM	Golden Brown PREMIUM	Rust Mica PREMIUM

On small orders a minimum charge may apply.



Escape the bustle of busy workspaces with Artus Nest, this solo workspace pod is a sought after retreat for focused work. Seamlessly combining elements from the Monsal and Artus ranges, ensuring visual harmony with other products from the range.

Artus Nest comes equipped with a built-in writing tablet, perfect for enjoying a cup of coffee, jotting down notes, or a brief laptop session. Enclosed by Artus panels, it creates an acoustic cocoon, enhancing concentration by dampening external noise.

WOOD LEG FINISH - No Upcharge



Beech



Oak

STANDARD WOOD COLOURS:

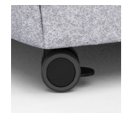
Walnut Stain	Graphite Grey RAL 7024	Jet Black RAL 9005	Zinc Yellow RAL 1018	Pigeon Blue RAL 5014
Beige Red RAL 3012	Ruby Red RAL 3003	Moss Green RAL 6005	Reseda Green RAL 6011	Sapphire Blue RAL 5003

OR



Custom RAL colour.

CASTORS - No Upcharge



Castors  
Black

METAL LEG FINISH - No Upcharge



STANDARD POWDER COAT COLOURS:

Wine Red RAL 3005	Ruby Red RAL 3003	Beige Red RAL 3012	Broom Yellow RAL 1032	Zinc Yellow RAL 1018	Oyster White RAL 1013
Steel Blue RAL 5011	Sapphire Blue RAL 5003	Pigeon Blue RAL 5014	Blue Grey RAL 7031	Signal White RAL 9003	Pebble Grey RAL 7032
Grey Beige RAL 1019	Yellow Grey RAL 7034	Fir Green RAL 6009	Moss Green RAL 6005	Reseda Green RAL 6011	Cement Grey RAL 7033
Light Grey RAL 7035	Graphite Grey RAL 7024	Jet Black RAL 9005	Quartz PREMIUM	Golden Brown PREMIUM	Rust Mica PREMIUM

On small orders a minimum charge may apply.



POWER



Porthole power modules can be incorporated into seat side on request.



Phase power modules can be incorporated under seat fronts.

# Warranty Information

---

## 5 YEAR – NORMAL FAIR WEAR & TEAR

This includes the structure and any foam/padding materials.  
Fabrics are covered by fabric manufacturers' warranties, usually 5 years, dependant on fabric choice.

Please refer to full **sixteen3** Warranty information document for more details.  
**sixteen3** ltd reserve the right to update product data information without prior notice.

# Standards

---

## FLAMABILITY

The foams & fillings of this product meet BS EN 5852: Part 2, in accordance with The Furniture and Furnishings (Fire) (Safety) Regulations 1988.

## CONSTRUCTION

Designed to meet & exceed BS EN 16139: 2013 – Strength, Durability and Safety Requirements for non-domestic seating.

# Cleaning & Maintenance

---

## GENERAL MAINTENANCE

- Vacuum upholstery regularly to remove dust and grit.
- Most hard surfaces can be cleaned with a soft cloth, dampened with a small amount of water and buffed dry.
- Clean spills and stains quickly to prevent them setting in (see specific fabric care instructions below).
- If being used in a spill/stain prone area specify an appropriate finish with stain-repellent properties.

**Refer to fabric manufacturers own guidelines for specific information.**

## NATURAL FABRICS

In addition to regular vacuuming, wool and other natural fibres can usually be cleaned using appropriate upholstery shampoo. For a deeper clean it is best that wool be dry cleaned, as over-wetting can cause shrinkage and appearance change. Never apply bleach, ammonia, alkali or strong acids to wool upholstery.

## SYNTHETIC FABRICS

Vacuuming is the best regular maintenance followed by speed of action to remove spills and stains rapidly as soon as they occur. Most synthetic fabrics can be wiped down with a water soaked damp cloth without fear of damaging fibre or removing colour. Stubborn stains can be removed with a quality upholstery shampoo.

## LEATHER

Leather should be regularly dusted with a soft cloth and vacuumed with a soft brush extension. Most types of aniline can also be treated with specialist products to help preserve colour/finish etc. As leather is a natural material, discrepancies in surface texture and 'puddling' in seat areas is to be expected.

## POWDER COATED

Clean surfaces regularly with a slightly damp cloth and a mild solution of soapy water. Buff dry with a soft duster.

## WOOD FINISHES

Clean surfaces regularly with a slightly damp cloth and buff dry with a soft duster. The finish on all wood and laminate surfaces is designed to withstand moderate heat and some spillages, but all spillages should be wiped off with a damp cloth straight away. Certain wood finishes will naturally change in appearance with age. We cannot guarantee an exact match of any timber products.



## CONTACT

+44 1925 850 500  
info@sixteen3.co.uk  
@sixteen3\_ltd

**HQ:**  
Unit 2, Westway21  
Chesford Grange  
Woolston, Warrington  
Cheshire  
WA1 4SZ

**London:**  
25 Bastwick St  
Clerkenwell  
London  
EC1V 3PS

**Manchester:**  
Material Source Studio  
1 Federation St  
NOMA  
Manchester  
M4 4BF

**Glasgow:**  
Material Source Studio  
180 West George St  
Glasgow  
G2 2NR

**sixteen3.co.uk**