

QUIET.BOX Duo and QUIET.BOX Duo Organic

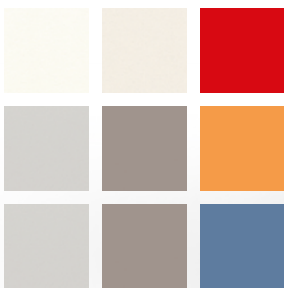
PEACE AND QUIET FOR TWO

BUILT-IN LED
for uniform illumination

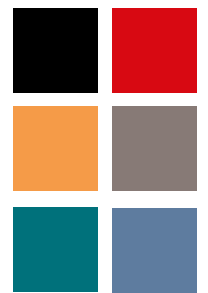
DOOR HINGES
3-D adjustable in silver,
optional in white or black

REAR WALL
Plastic/melamine, fabric or
fixed glazing

SOLID SURFACES
choose from the K+N fabric
collection MFC (in plain and
decorative finish)
Acoustic insulation level
Rw 42 dB



SEAT UPHOLSTERY
choose from the K+N fabric
collection (Standard 22, 28
and 29, Comfort 39, or
Premium 42, 46 and 49)



PROFILES
Available in a
selection of colours,
including RAL colours



**TEXTILE INSIDE
SURFACES**
for an ideal interior
acoustic choose from the
K+N fabric collection
(Standard 22, 28 and 29,
Comfort 39, or
Premium 42, 46 and 49)

ACOUSTIC GLAZING
with acoustic
insulation level
Rw 38 dB.
Door Rw 37 dB

CONTROL/ACCESSORIES
Customised equipment
as required



QUIET.BOX Duo and QUIET.BOX Duo Organic INFOCARD



INTERNAL VARIANT 1
NET.WORK.PLACE bench and side table



INTERNAL VARIANT 2
Mini-office for focused working

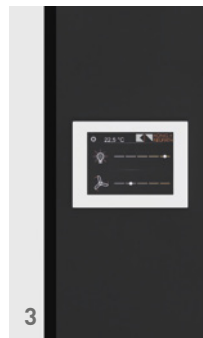


INTERNAL VARIANT 3
QUICK.II and side table

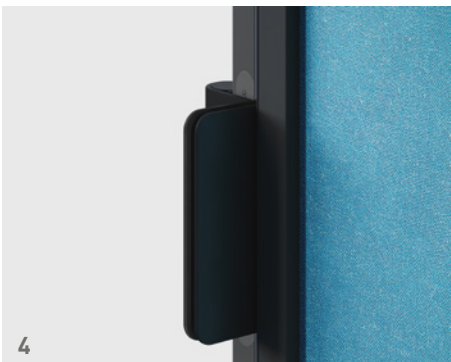


QUIET.BOX Duo Organic
version with rounded corners

Size	2200 x 1200 x 2226 mm
Ceiling	Acoustic ceiling in fabric
Wall configuration	2 variants
Absorption (echo)	Yes
Sound insulation	Yes, 37-43 dB
Door	Hinged door
Ventilation	Controllable, active ventilation
Climate control	On request
Lighting	Ceiling mounted light
Glazing	Large areas
Installation time (excl. transport)	6 hours
Reconfiguration on the same floor	approx. 1/2 day
Construction	Low-noise
Flexibility	Reposition as required
Fastened to the floor of the building	No
Wire management	Wired post, centred in the rear wall
Sound insulation	Solid walls up to 43 dB, glazed sections 38 dB



1 | FABRIC CEILING
Acoustic properties.



2 | CEILING TRIM PROFILE
Neat covering for ceiling structure and concealed technology.

3 | OPERATING CONSOLE
Light and ventilation switches standard version or available with touch function.

4 | DOOR HINGES
3-D adjustable in silver, optional in white or black.

5 | FLOOR CONNECTION
Flush level entry.