

abstracta



Collection 2023

At Abstracta, we have been working to create better soundscapes since 1972 – which makes us acoustics pioneers. Today, we offer a wide variety of solutions for different types of environments and requirements – from thoughtfully designed sound-absorbent screens and surfaces to innovative furniture with integrated acoustic characteristics. And in close collaboration with some of the world's most influential contemporary designers, we are constantly exploring new ways to create better soundscapes.

We manufacture our furniture in the province of Småland, Sweden, and our customers are located throughout the world. Abstracta is part of Lammhults Design Group.

abstracta

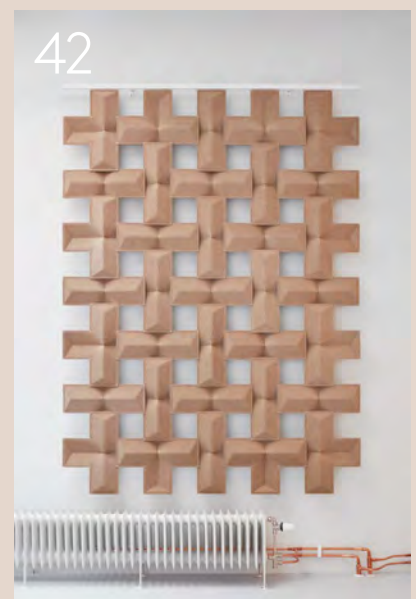
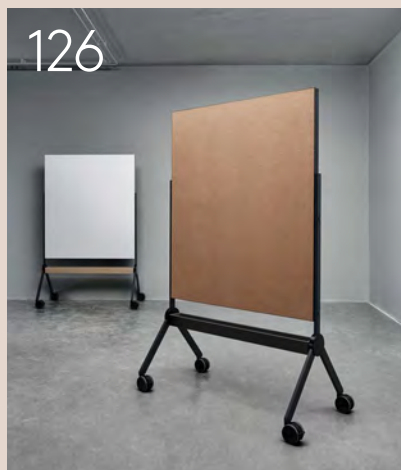
Unlike the landscape, the soundscape doesn't disappear as you close your eyes.
There's no escaping it, but there are many ways to make it more pleasant.

Collection 2023

Content

- 10 Acoustic Wall Art
- 16 Silent Pods
- 26 Acoustic Lighting
- 42 Suspended Absorbers
- 50 Acoustic Wall Panels
- 70 Floor Screens
- 86 Desk Screens
- 98 Cubicles
- 112 Acoustic Furniture
- 118 Ceiling Baffles & Ceiling Panels
- 126 Writing Boards





Soundscapes for new patterns of work

Tomorrow's workplaces will be more sustainable, more human, and more creative. They will be designed with a greater focus on well-being and health. It is these kinds of environments that we at Abstracta strive to help create.

Our starting point is always a space's soundscape. We are convinced that awareness about the importance of soundscapes in terms of well-being will continue to grow.

Our products are designed to address the diversity of requirements that characterise contemporary workplaces. The opportunity for employees to work undisturbed, and the fundamental necessity of a pleasant soundscape and a stimulating visual surrounding.



Abstracta x Wall of Art



Abstracta's Design philosophy

At Abstracta, we know that sound is crucial to human well-being. Our purpose is to design comfortable soundscapes that make people feel better. Our design philosophy guides us in our everyday practice and helps us to achieve our purpose.

We believe in attentive design

Attentive design seeks solutions through innovation. It identifies overlooked problems and explore better ways to solve familiar ones. Innovation is not an end in itself but a means. What matters is the value a product adds to a soundscape.

Attentive design is curious and probing. It can be about investigating how to add acoustic value to new categories of furniture, finding manufacturing materials that contribute to biodiversity, or adding functionality to a product to maximise its versatility.

Ultimately, attentive design is about focusing on the human need for both functionality and beauty. Attentive design is open, empathetic and interested in the spaces it is part of.

Design is a collaboration

We are a design-oriented company that prizes working closely with our designers. We believe that design is a collaborative and exploratory endeavour, aimed at uncovering new ways to bring lasting value to a space.

Our belief that design is collaborative also means that we are open-minded and plugged into world events and developments in science and technology. For example, we are continuously examining how we can employ renewable natural materials like cork, hemp and flax in new ways.

Good design is always sustainable

There are only two good reasons to create a new product: to solve a problem that was previously overlooked or to provide a better solution to a familiar one. It's a simple matter of economics.

Our thrifty approach to design also applies to energy and materials. In fact, we're opposed to all forms of waste. We try, for example, to use any waste produced by one part of the design process as material in another part.

Our products are made from materials of the highest quality and speak a design language that is timeless. We prefer to work with renewable natural and recycled materials. And we avoid mixing materials, which makes our products easy both to repair and to recycle.

Zero-waste with Abstracta's recycling service

We have developed a recycling service for our clients. We're collecting worn-out acoustic panels and other products for renovation, reuse or recycling. To facilitate circularity, all our products are module-based.



This is what we do today to reduce our carbon footprint

- Abstracta's factory in Lammhult runs on 100 % renewable energy.
- Textile waste and recycled plastic bottles are used as acoustic filling in our products.
- 95 % of our products are Möbelfakta certified.
- Since 2019, all our new company cars are either electric or plug-in hybrids.
- We prioritize local suppliers to reduce negative environmental and social impact in our supply chains.
- We prioritize transport partners with Euro 6 vehicles.

Abstracta 2030 – our five sustainability goals

- Carbon-neutral
- Recycling of 100 % of our textile waste
- 100 % certified wood
- 100 % Möbelfakta certified products
- Circular range of products

Acoustic guide

The soundscape is not visible,
but it affects us more than we think.

Three symbols to make it easier to
understand how our acoustic products
affect the audio environment.



Absorption

Absorption means that the sound that hits a surface gets absorbed and transformed into heat.



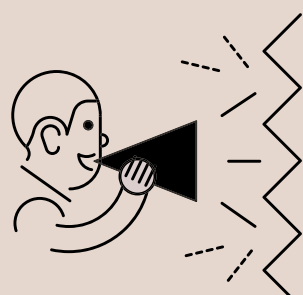
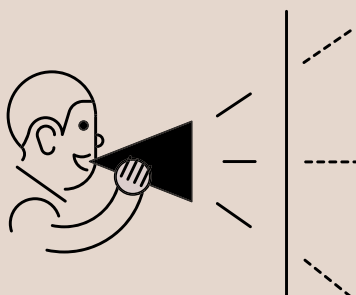
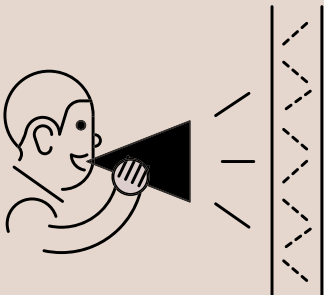
Attenuation

Attenuation means that an object shields off and lessens the sound level from one side of the object to the other.



Diffusion

Diffusion means that a sound hitting a surface "shatters", which helps one avoid unpleasant sound reflections, in other words echoes.





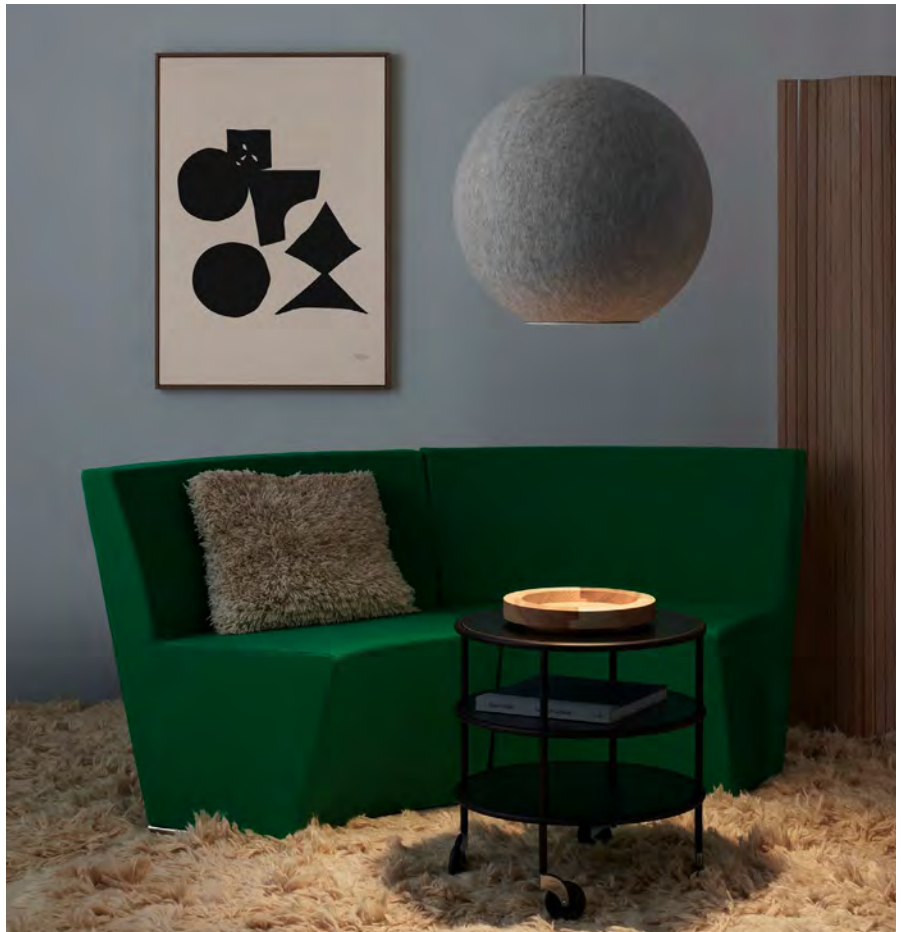
Acoustic Wall Art

Abstracta x Wall of Art



Abstracta x Wall of Art





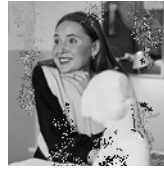
“The collection includes both colourful and more minimalist works.”

Abstracta and art platform Wall of Art have collaborated to develop a unique solution that combines acoustics with art. The objective is to create harmonious soundscapes while giving spaces personality and character with works from exciting artists. The collection of sound-absorbing panels featuring a total of 13 different motifs. The participating artists are Annika Hultgren, Evelina Kroon, Lucrecia Rey Caro, and Lisa Wirenfelt.



Absorption





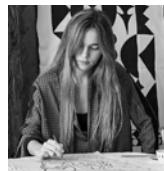
Artist Annika Hultengren

Annika Hultengren's works evoke the sky and the sea in different weather conditions, as well as the abstract expressionism of artists like Barnett Newman.



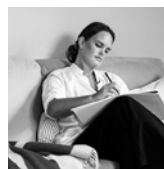
Artist Evelina Kroon

Evelina Kroon offers a contemporary perspective on traditional craftsmanship. She uses everyday materials like adhesive tape and MDF to create exciting graphic patterns. She has also undertaken highly acclaimed collaborations with ARKET and Svenskt Tenn, among others.



Artist Lucrecia Rey Caro

The works of Argentinean artist and graphic designer Lucrecia Rey Caro have a spontaneous and playful character. With great dexterity, she creates both abstract, organic forms and motifs inspired by everyday life.



Artist Lisa Wrenfelt

Lisa Wrenfelt's works are among the collection's most colourful. Their subtle humour and healthy dose of life-affirming optimism brighten up any space.



Zen Pod

Silent Pods

Zen Pod and Plenty Pod

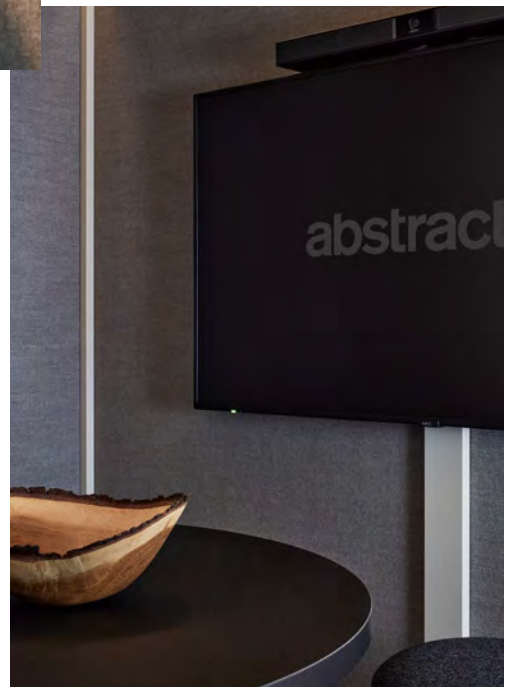
Zen Pod





Design
Staffan Holm

Staffan Holm has a master's degree from the Academy of Design and Crafts at the University of Gothenburg, and has won numerous prizes, including a Swedish EDIDA Chair Award, two Elle Decoration Swedish Design Awards (2017, 2014), a Wallpaper Design Award (2017), and a Bruno Mathsson Award (2013). He has exhibited at Artipelag (2013) and at the Röhsska Museum (2011), among other venues.



Zen Pod is an acoustic oasis. It creates the perfect conditions for digital meetings, quiet conversations and focused work. Its outer acoustic walls also help to improve the soundscape of the surrounding environment by stopping, rather than reflecting, ambient noise. Zen Pod dampens the sound by 31 dB, which means that it achieves sound attenuation class A. Zen Pod is available in two equipment versions: "Essential" and "Advanced". It comes in three sizes; Small, Medium and Large.



Absorption



Attenuation



"The sparse and harmonious design of the room itself is inspired by Japanese interiors."



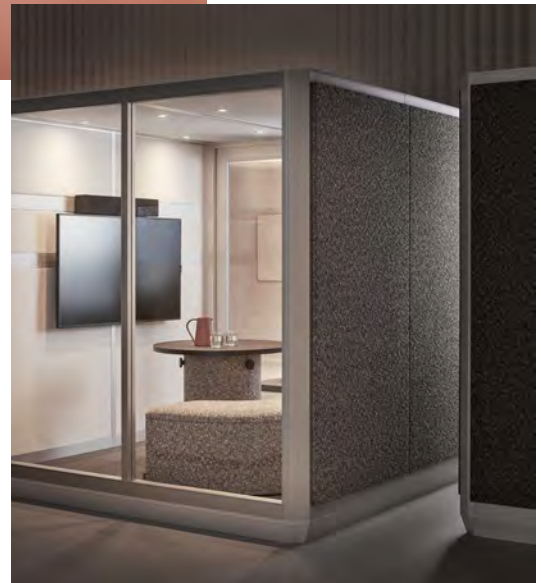


"The room is easy to assemble and use, and is designed to blend in with its surroundings."



Plenty Pod





Plenty Pod is a series of mobile, silent rooms. Their high level of flexibility makes them into perfect representatives of user-friendly architecture. They are designed to offer room for meetings and phone calls in noisy environments such as open-plan offices and public spaces. Plenty Pod is a perfect solution if you are missing a quiet room in an open space office or as often mentioned as an activity based office. Plenty Pod comes in variety of sizes and colours. Complement your Plenty Pod with a video conferencing system - including a complete solution of monitor screen, speakers, camcorder and smartphone control of lighting and fans inside the Plenty Pod.



Absorption



Attenuation





Acoustic Lighting

Moon, Holly, Lily,
Scala Ceiling and Trumpet

Moon





Design Thomas Bernstrand

Driven by curiosity and armed with a critical eye, designer Thomas Bernstrand is devoted to challenging our habitual perceptions, our understanding of things and where they belong. His works often involve unexpected shifts between contexts, resulting in particular design idioms and functionalities appearing in places where they have never been seen before.

Two important factors behind a room's atmosphere are its soundscape and its lighting. The Moon acoustic lamp is a superbly orchestrated fusion of lighting and acoustics by designer Thomas Bernstrand, who has coupled his long experience in the former with his deep interest in the latter. A globe-shaped lamp of functional precision, innovative design and exceptional acoustics, Moon provides directed lighting quality of the highest order. Its shape and generous scale allow it to absorb both high- and low-frequency ambient noise effectively.



Absorption



"Moon is characterized
by elegance and perfect
execution."



Holly





Design Runa Klock and Hallgeir Homstvedt

Runa Klock studied at the Oslo Academy of Fine Arts, but is now based in Ålesund. In addition to design objects, her multi-disciplinary and collaborative practice also conceives food packaging, exhibitions and stage sets. The prestigious Jacob Prize was awarded to Runa Klock in 2020.

Hallgeir Homstvedt studied industrial design at the University of Newcastle in Australia. Today, he is based in Oslo, where he has run his own studio since 2009, before which he worked at renowned studio Norway Says. Over the years, Hallgeir Homstvedt has won numerous awards and his works have been exhibited in London, Tokyo, Oslo, New York and Milan.

The new Holly acoustic lighting is sculptural, mysterious, and plays with the contrasts between light, reflection, and shadow. The product is good at absorbing low frequency sound. Holly is available in two versions: a vertical one suitable for lobbies and other high-ceiling spaces, as well as in corners for increased acoustic effect; and a horizontal one that can be suspended over large tables in, for example, restaurants, bars, and workspaces.



Absorption



"Improving a soundscape
is easy. Doing it with style is
the hard part."



Lily





Lily got its name from its early prototypes, which resembled water lily leaves. Since then, its shape has been simplified and made more open to association. Still present, however, is the sense that the lamp is floating in the air, imbuing the room with a splendid stillness. Lily's subtle design enables it to retain a soft, organic character, despite its rather geometric form.

Fully 90 or 120 cm in diameter, Lily is intended for lighting large rooms, such as restaurants and open office spaces – environments where both noise and visual information levels are high. Lily comes in a variety of colours.

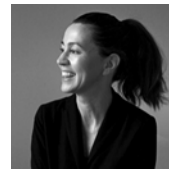


Absorption

**Design Runa Klock and
Hallgeir Homstvedt**

Scala Ceiling





Design Anya Sebton

Anya Sebton is an award-winning designer and interior designer with commissions from leading Scandinavian producers including Lammhults, Asplund and Abstracta. Her works are found in airports, embassies and museums around the world. A simple graphic style and solution-oriented approach have made her a highly acclaimed designer.

Product family

- Scala Floor p.82
- Scala Mobile table screen p.91
- Scala Suspended p.120
- Scala Table p.90
- Scala Wall p.56
- Scala XL p.52

Scala is a playful paraphrase on corrugated iron that simultaneously employs the functionality of the shape. The design of the sound-absorbent is not only developed for visual reasons, but primarily to contribute to a softer soundscape.

The ceiling-mounted version of Scala prevents the sound waves from continuing upwards in the room, which contributes to a more pleasant soundscape, for example in an office space or in a restaurant environment.



Absorption

Trumpet





Design Stone Designs

Stone Designs is a rewarded Madrid-based design studio. Its main asset is the human factor. Stone makes projects for and because of the people. Cutu Mazuelos and Eva Prego founded their studio Stone Designs in Madrid 25 years ago, right after graduating from University. But their major influence is not from Southern Europe, but from Japan, where they also have a studio, and from Scandinavia.

Trumpet is characterized by simplicity and a careful attention to the detail, which become obvious when you have a close look. Here, the designers use the iconic shape of the music instrument to both direct the light and to make a subtle connection to the space below the lamp. Trumpet is remarkably thin, which gives the product a certain elegance. Yet, it makes a huge difference when it comes to noise.

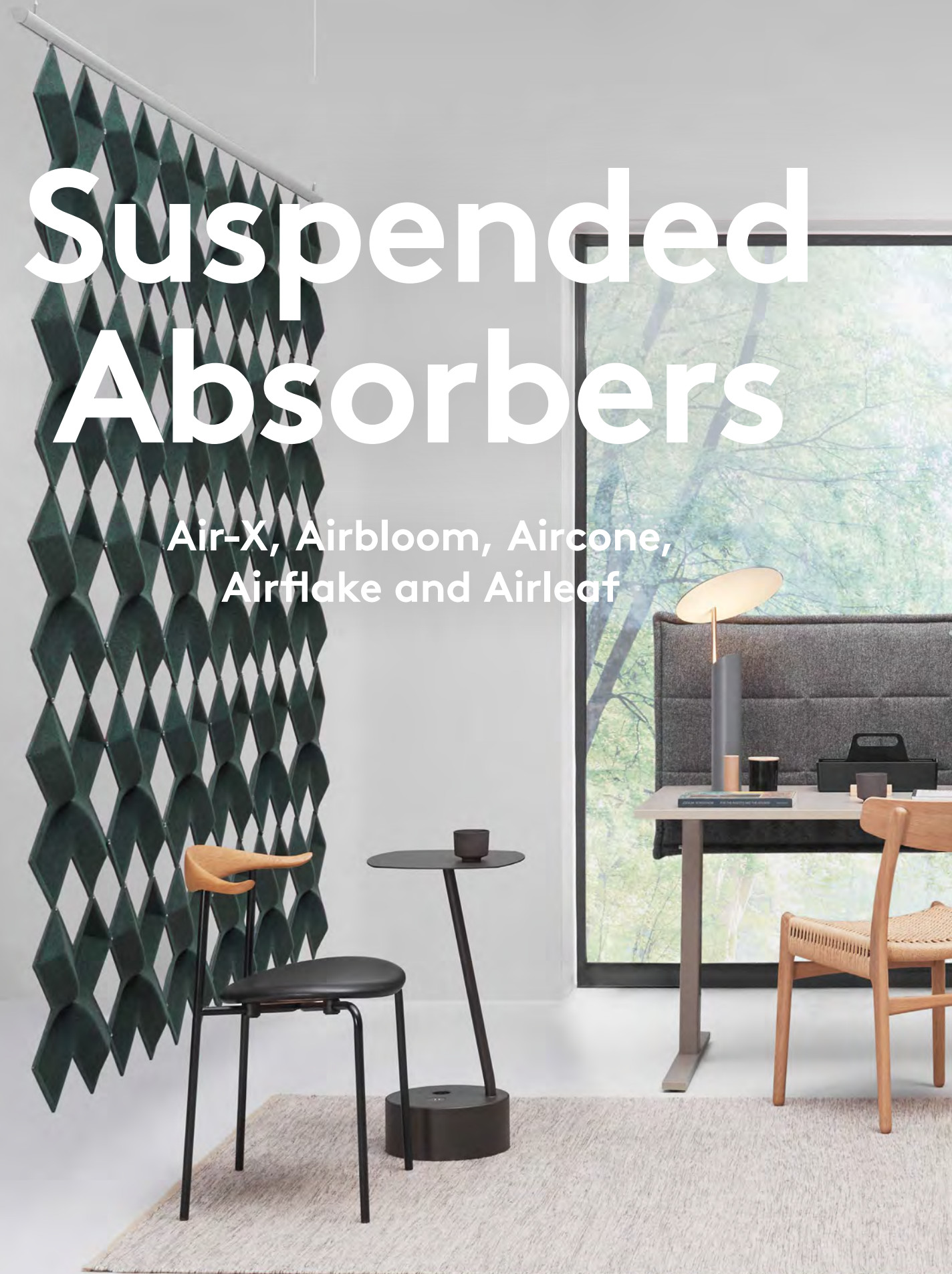
Trumpet is available in three standard widths (1040, 1640 and 2040 mm) but can be customized in other sizes. It is available in a range of fabrics and colors.



Absorption

Suspended Absorbers

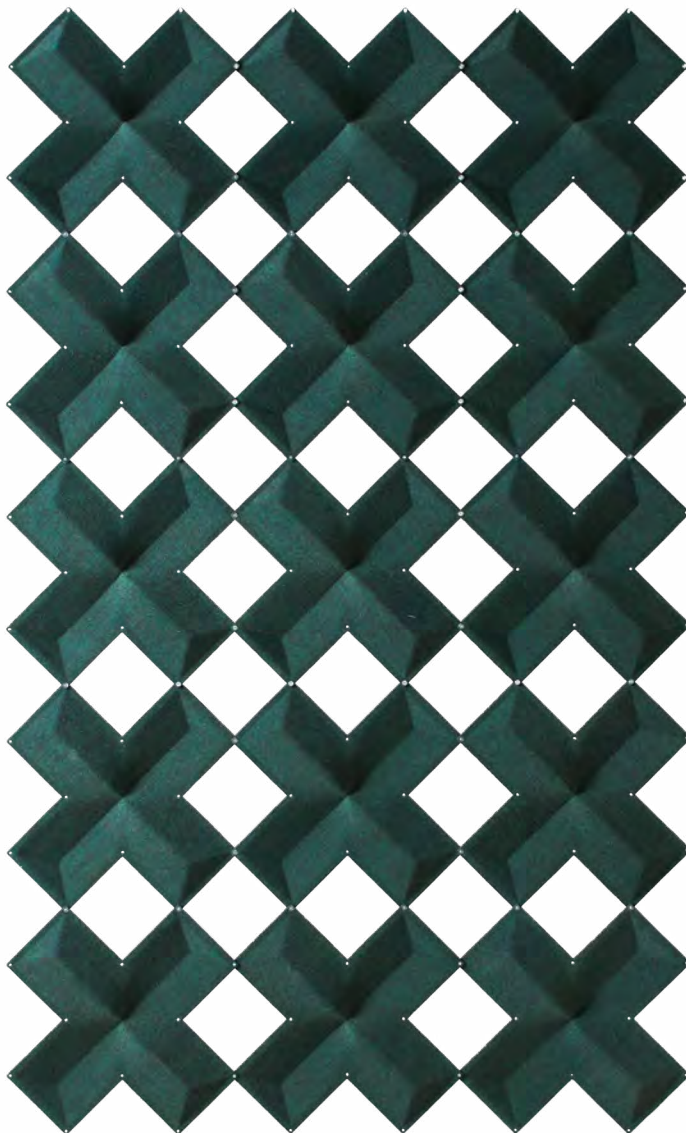
Air-X, Airbloom, Aircone,
Airflake and Airleaf





Air-X





Design Stefan Borselius

As clearly demonstrated by his furniture creations, Stefan Borselius is a designer who takes no shortcuts. Going about things thoroughly is something he learned from his grandfather and great-grandfather, both cabinetmakers. His path to becoming a furniture designer thus began with learning this craft properly at Steneby in Dals Långed. He then continued his studies in Stockholm at the Carl Malmsten Furniture School and later Konstfack University College of Arts, Crafts and Design.

Product family

- Airbloom p.46
- Aircone p.47
- Airflake p.48
- Airleaf p.49

Air-X is a product in the Air family that forms a new graphic pattern with straight lines. The modules are made from pressed felt and are available in a wide range of colours. The modules can be combined with each other to form suspended sound absorbers in a number of shapes and sizes.



Absorption



Diffusion

Airbloom

Product family

- Air-X p.44
- Airflake p.48
- Airleaf p.49

The original idea behind Airbloom is the most iconic symbol of the nature: the blooming flower. Airbloom imbues the room with positive visual energy, while creating a more harmonious soundscape. As with the other Air series products, Airbloom offers a simple way to dampen noise and create separate areas without compromising the room's openness. Airbloom is available in a great many colours, giving you plenty of freedom to create the partition you want.



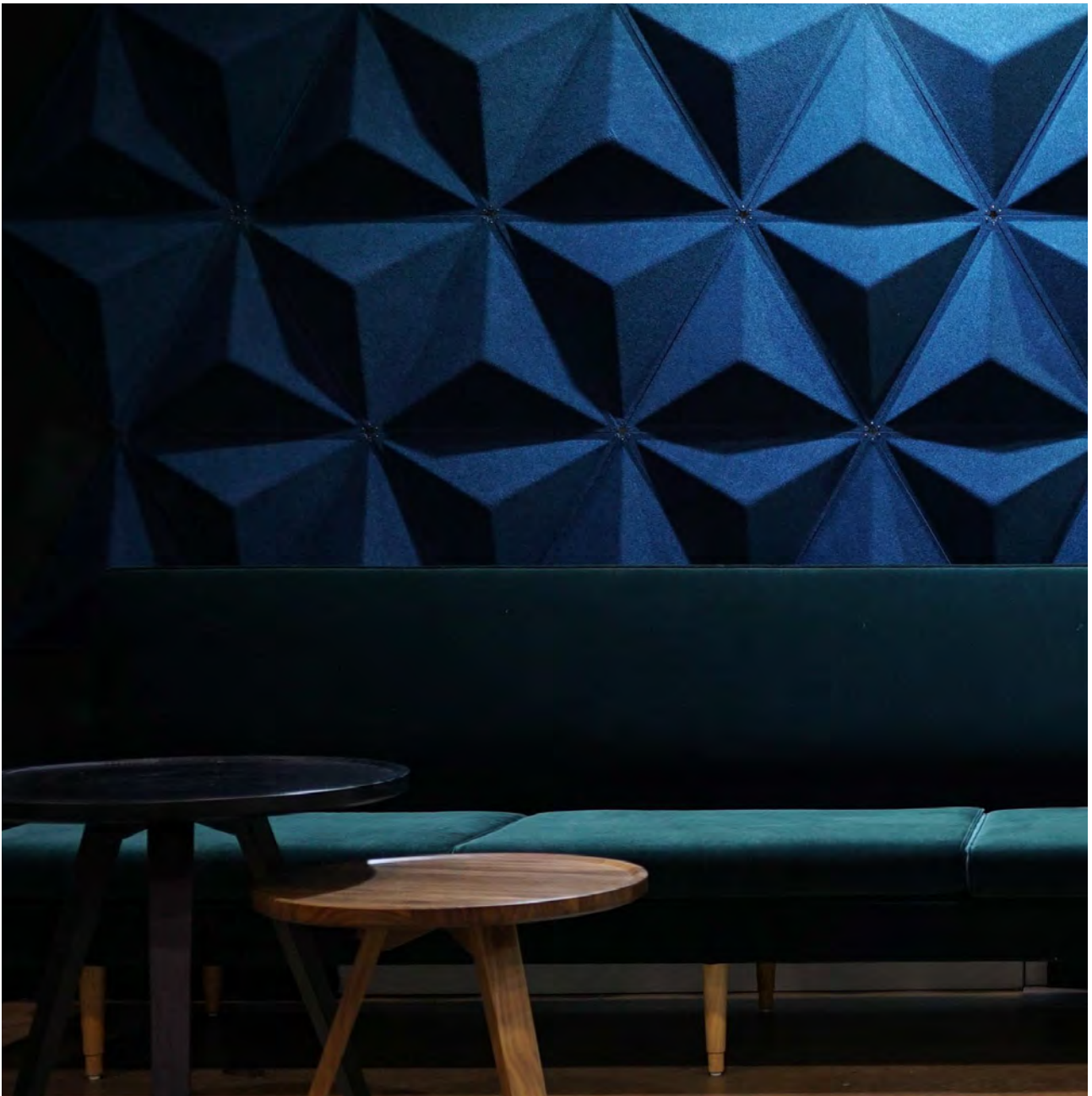
Absorption



Diffusion

Design
Stefan Borselius





Aircone

Aircone is the sequel to Stefan Borselius's highly successful Airflake. Its design language is comparatively strict and more graphic. Combining the conforming modules with each other elicits a dynamic interplay of lines and shadows. Aircone screen formations are more solid than those of its predecessor, enabling the creation of clearer room divisions. Yet, it is also possible to leave openings to allow light to pass through or to create interesting patterns.



Absorption



Diffusion

Design
Stefan Borselius



Airflake

Airflake hanging room divider was created by designer Stefan Borselius in 2006 and was the first product to emerge from the groundbreaking Air concept. Made of fabric-covered moulded fibre felt, it absorbs sound and prevents echoes. The hexagon-shaped modules are assembled together to form 'open' screens that shape or suggest new spaces within a space, while allowing light to pass through unobstructed.



Absorption



Diffusion

**Design
Stefan Borselius**

Airleaf

Product family

- Air-X p.44
- Airbloom p.46
- Aircone p.47

Following his successful Airflake and Aircone products, designer Stefan Borselius brings nature into the interior space. "The idea is that you should be able to create anything – from organic foliage to strict graphic patterns," explains Borselius. Airleaf makes it possible to create separate areas and a pleasant soundscape while preserving the room's openness. You determine the degree of openness yourself by choosing how the leaf-shaped modules are combined.



Absorption



Diffusion

Design
Stefan Borselius



Scala XL



Acoustic Wall Panels

Scala XL, Scala Wall, Bits Wall,
Domo Wall, Sahara, Sky Wall,
Soneo Wall and Triline Wall



Scala XL





To improve the soundscape in large and noisy spaces such as auditoriums, lobbies, and shopping malls, the sound absorbing wall panel Scala XL is perfectly suited since it has a powerful sound absorbing effect. Scala XL wall panel's interplay of shape and material has a powerful sound absorbing effect. The increase of size not only amplifies its acoustic capacity, but also affects its aesthetic qualities. Scala XL sound absorbing wall panel has a bold, sculptural appearance. The design is inspired by arched roofs, and columns. Available in convex and concave forms.



Absorption

Design
Anya Sebton

Product family

- Scala Ceiling p.38
- Scala Floor p.82
- Scala Mobile table screen p.91
- Scala Suspended p.120
- Scala Table p.90
- Scala Wall p.56

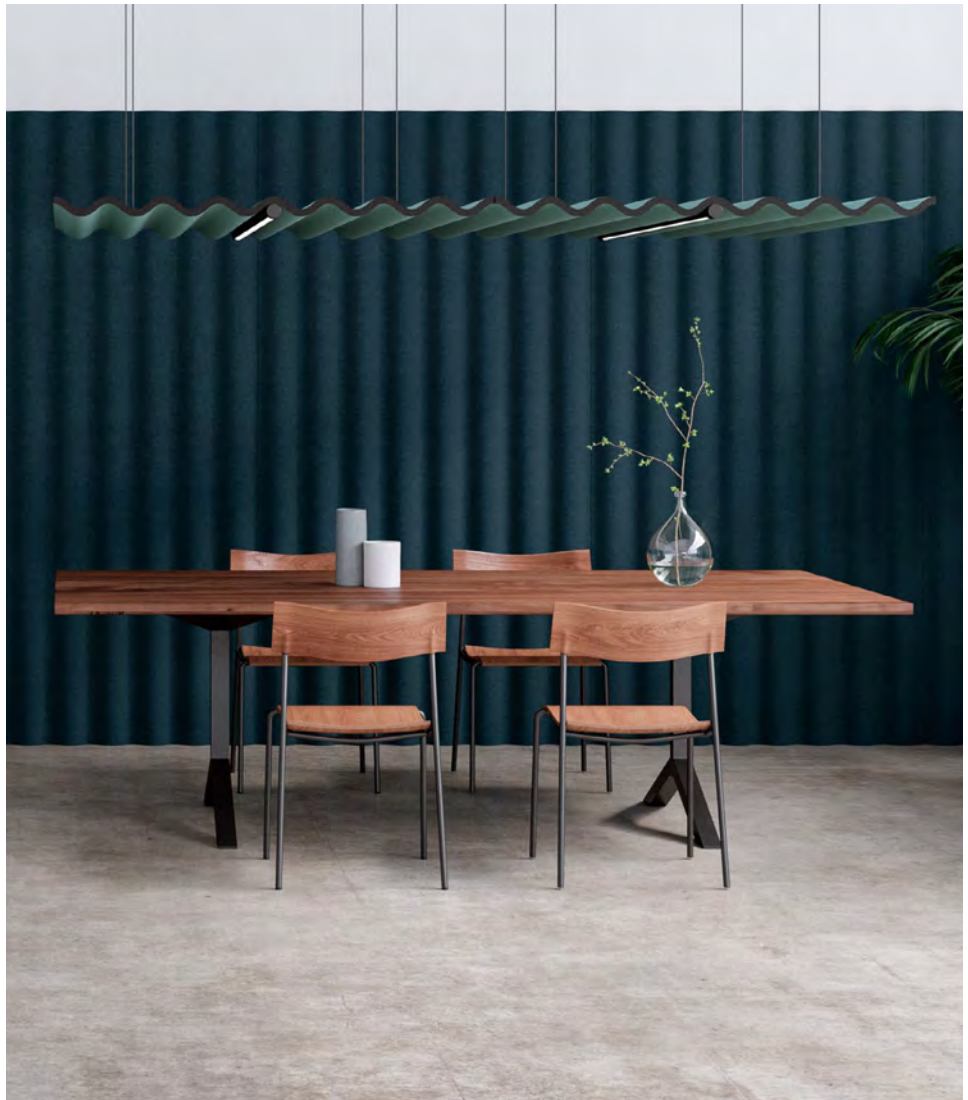


"Scala XL has a bold
sculptural appearance."



Scala Wall





"A perfectly simple interaction
between material and form"

Scala wall sound absorbing panels fits perfectly into larger rooms thanks to its discreet expression. The undulating shape of the panel means that the product has a larger absorbent surface than if it were completely smooth. The modules are moulded panels that contain a sound-absorbing, fire-class core that can be upholstered with fabric.



Absorption

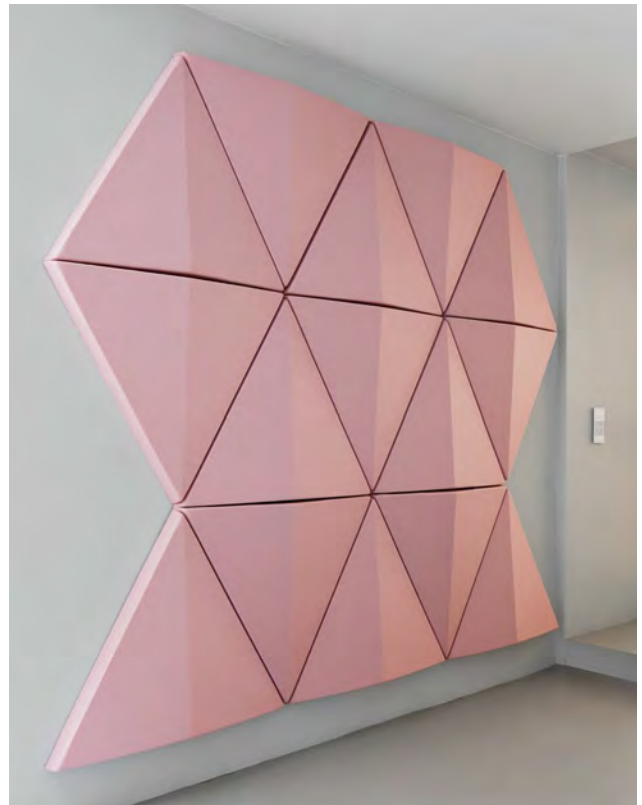
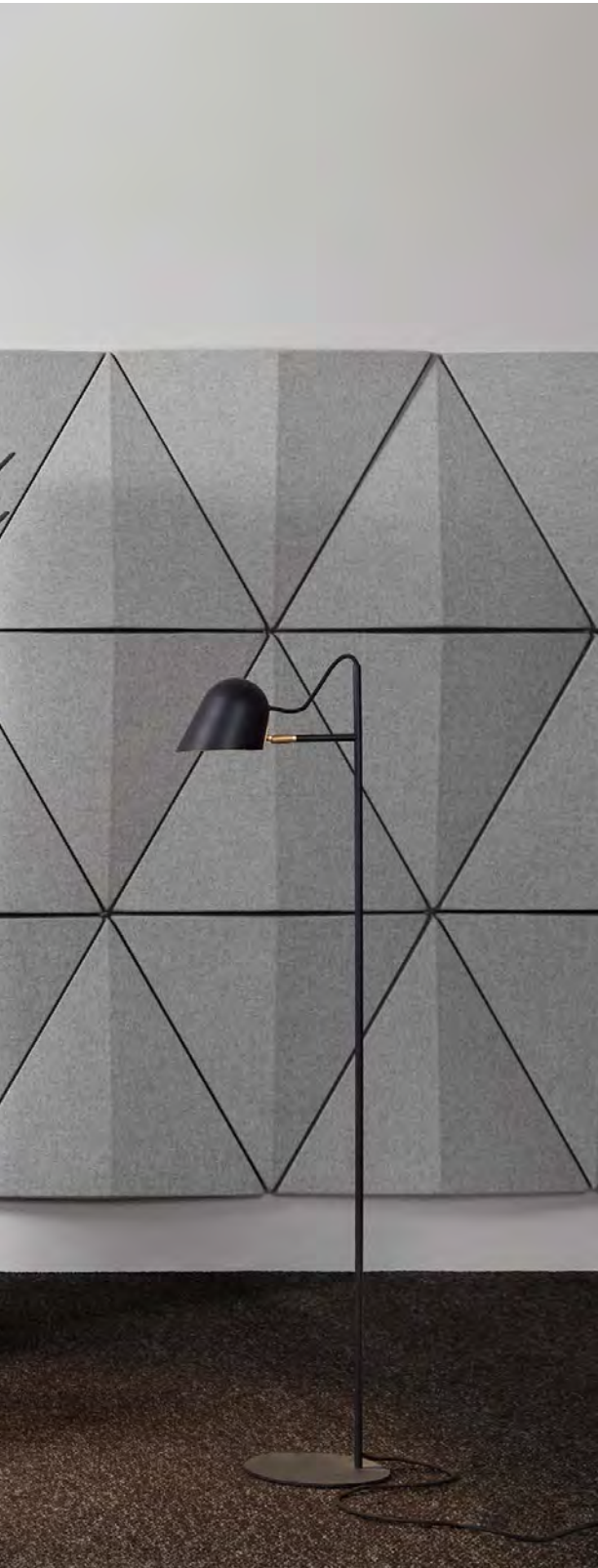
Design
Anya Sebton

Product family

- Scala Ceiling p.38
- Scala Floor p.82
- Scala Mobile table screen p.91
- Scala Suspended p.120
- Scala Table p.90
- Scala XL p.52

Bits Wall





“Less noise. More visual energy.”

Anya Septon's award-winning screen concept, Bits Wall, is based on the triangle – a geometric shape rich in symbolism. Here, the triangular form provides visual energy while contributing to a better soundscape by diffusing sound waves and thus preventing echoes. The triangular Bits Wall panels can be mounted both horizontally and vertically, allowing you to combine them in any desired pattern. Their interior consists of a sound-absorbent material, which is covered in fabric. The Bits Wall modular panels allow you to create combinations in whichever sizes, colours and patterns you wish.



Absorption

Design
Anya Septon

Domo Wall



Product family

- Domo Cubicle p.102
- Domo Floor p.81
- Domo Table p.88
- Domo Wall Booth p.104



"For quieter
and more elegant
environments."

The full elegance of Stefan Borselius's Domo concept is revealed when multiple screens are combined on one wall. A beautiful interplay of light and shadows then emerges from the meeting of their bevelled edges. This dynamic is further enhanced by employing screens in different colours.

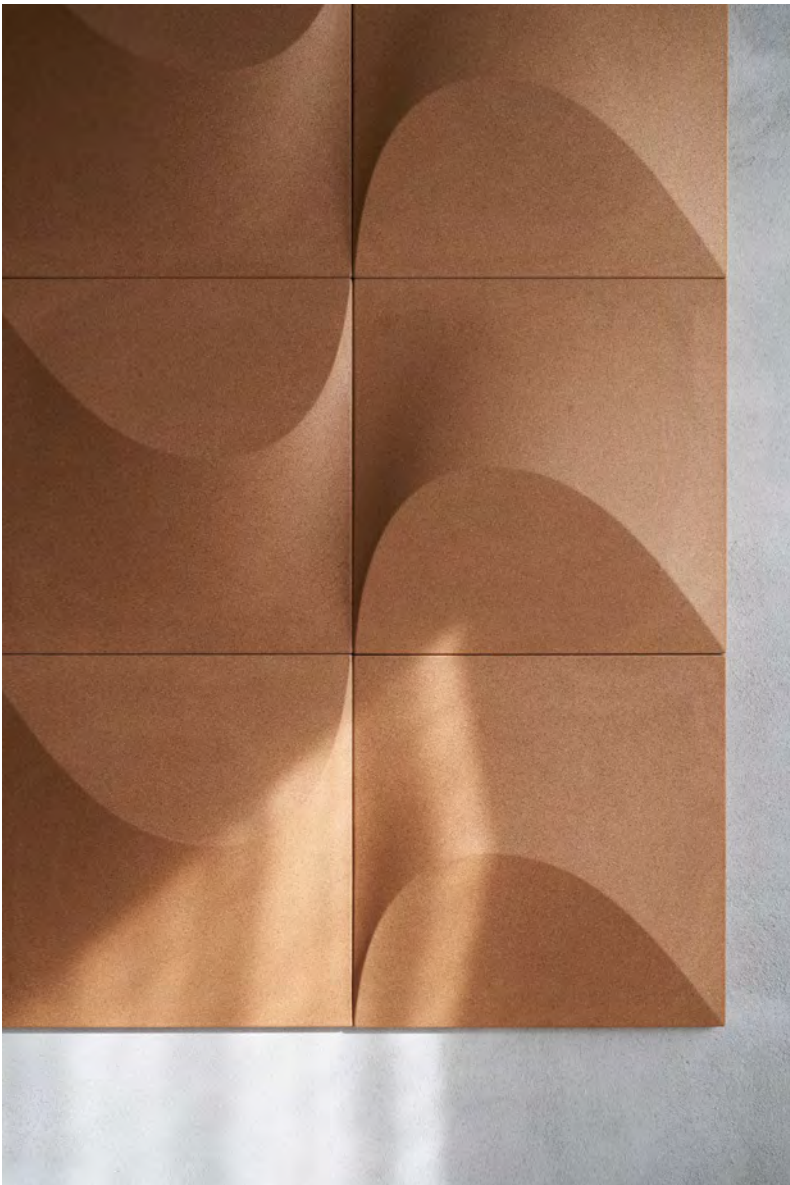


Absorption

Design
Stefan Borselius

Sahara





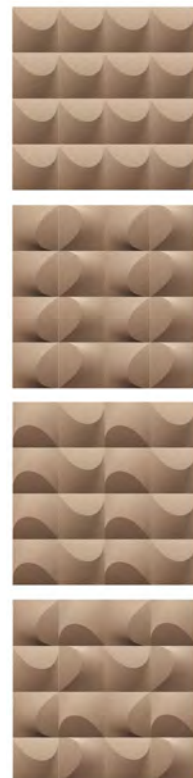
Design
Gabriel Tan

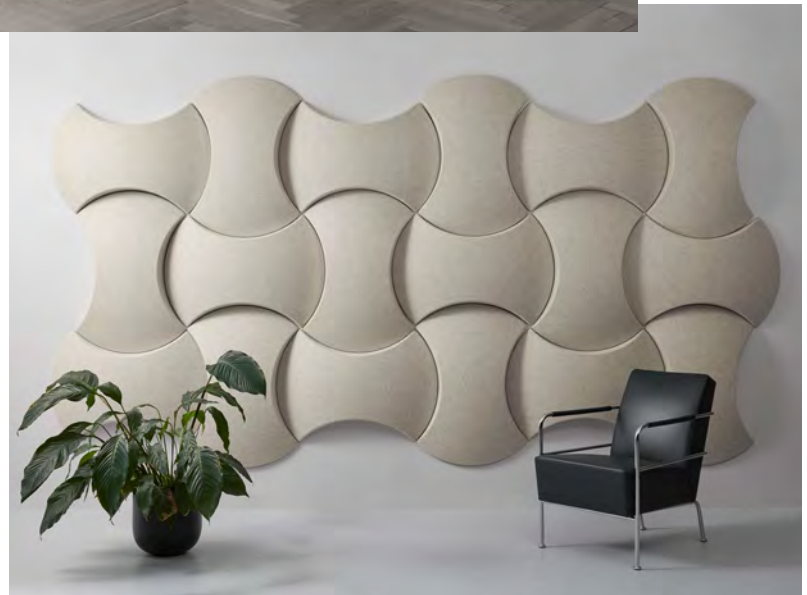
Gabriel Tan creations for brands like Japan's Ariake and Sweden's Blå Station have been getting a lot of attention. Although he is based in Singapore, his works are profoundly cosmopolitan – inspired by trips to other parts of the world, conversations and collaborations with other designers, and encounters with an array of cultures and craft traditions. Sahara is a case in point.

The wall panel created by Gabriel Tan is made of cork, a natural material that offers excellent acoustic properties. As simple and spontaneous as a sand formation carved by the wind, its shape is the perfect starting point for creating a multitude of patterns – from the asymmetrical to the symmetrical, from geometrically strict configurations to dynamic, random formations reminiscent of sand dunes.



Diffusion





Thanks to its sculptural form, Sky delivers a radical improvement to the acoustic landscape. The shape's starting point is the sphere, which Stefan Borselius has reduced to an hourglass-like shape that forms beautiful wave patterns when the modules are combined with each other. Sky is available for both walls and ceilings.



Absorption

Design
Stefan Borselius

Product family
● Sky Ceiling p.124

Sky Wall



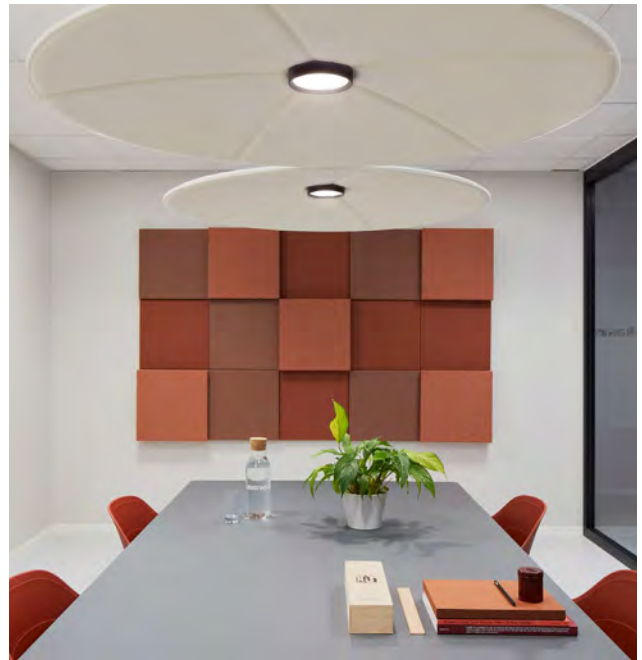
Soneo Wall

..



Product family

- Soneo Cubicle p.108
- Soneo Floor p.83
- Soneo Table p.94



The square is the most elementary of geometric shapes. Yet despite its simplicity, its dynamic potential is limitless. Soneo Wall, a versatile system of sound-absorbent square panels, makes this particularly apparent. The panels can be freely arranged into different patterns and upholstered in a multitude of fabrics and colours. They are also available in two thicknesses, which can be combined to create even more dynamic patterns.



Absorption

Triline Wall





"A playful and efficient
wall panel."

Triline Wall creates a better soundscape by both diffusing and absorbing sound waves. At the same time, the triangular prism shape of its panels interacts with light to introduce a visual dynamic and movement to the space. The sound absorbent panels can be mounted horizontally or vertically, allowing you the freedom to construct both symmetrical and asymmetrical formations.



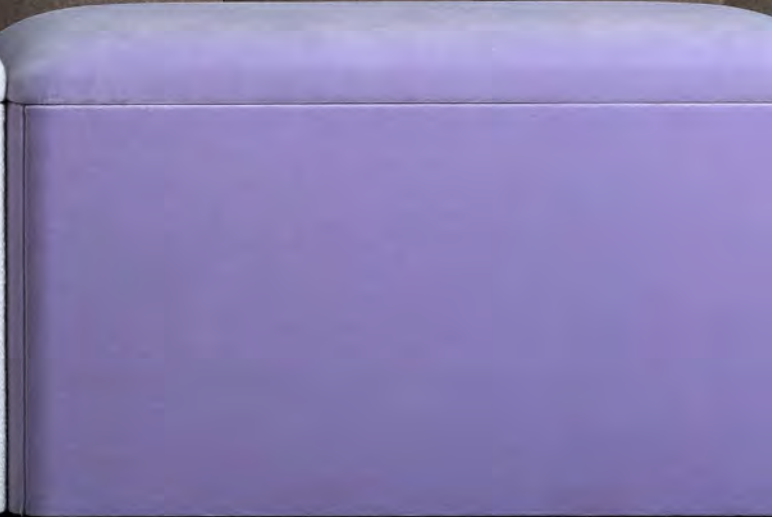
Absorption

Design
Anya Sebton

Floor Screens

**Abstracta Agile, Alumi, dB Floor,
Softline Floor, Domo Floor, Scala Floor,
Soneo Floor and Stitch Floor**

Agile



Abstracta Agile





Design Studio Stockholm

Studio Stockholm is an award-winning architecture firm that works on projects of all sizes. Abstracta is proud to introduce the new mobile media screen Agile; made for work environments that demand excellent functionality, aesthetics and acoustics.



Agile contributes to a better soundscape by intercepting and absorbing ambient noise, so people working around it are not disturbed. Its materials are of the highest quality. The acoustic panel is covered in reclaimed wool fabric, and its elegant frame is made of low environmental impact aluminium. And Agile's simple, minimalist design makes it look as seamless and uncomplicated as it is to use. A perfect blend of technology and human-centred design.



Absorption



"Makes it easy for
a team to quickly
gather on the fly."



Alumi





Design Nina Jobs

Certain designers never fail to create self-evident things – objects that appear as though they have merely been nudged toward their natural form. Nina Jobs is one of those designers. Nothing is ever missing, nor is any feature ever superfluous. Naturally, this goes for every product she has designed for Abstracta.

Product family
● Alumi Combi p.130



Alumi is an understated, versatile series of sound-absorbing screens by Nina Jobs. Available in several colours and discreet patterns, the screens are elegantly framed with an aluminium profile. Their interior consists of a noise-dampening material that creates a comfortable soundscape.



Absorption



Attenuation

dB Floor



Product family

- dB Cubicle p.100
- dB Modular Sofa p.114
- dB Pillar p.116



“More space for
the individual.”

dB is a screen system that serves as a discreet scenery set for open office environments and designed to be brought to life by the people who work there. Thomas Bernstrand's aim in designing dB was to enable people to make an impression on their surroundings – to cast the individual as a co-creator. The screens can thus be upholstered in any fabric, and the series includes a whiteboard-faced screen, a cork-faced screen for bulletins, and a range of clever accessories to accommodate photos, magazines and other personal items. Bernstrand's reputed mischievousness as a designer shows up in the form of an optional flower pot, balanced improbably on the top edge of the dB screen.



Absorption



Attenuation

Design
Thomas Bernstrand



Softline Floor

Softline is a timelessly designed screen that absorbs noise effectively and creates a more pleasant soundscape. It is characterised by a design language of “little gestures” – like its rounded corners, which contribute to an inviting and friendly atmosphere. Softline is highly compatible with other furnishings and blends in beautifully in most settings. To add a personal touch, you can choose from a wide range of colours!

Product family

- Softline Cubicle p.110
- Softline Table p.94



Absorption



Attenuation

Domo Floor

Thanks to Stefan Borselius's renowned attention to detail, Domo is an uncommonly elegant screen system that is easy to work with in better adapting a space to privacy needs and in creating a tranquil soundscape. The screens' elegantly bevelled edges give rise to a beautiful interplay of light and shadows, which defines Domo's understated dynamic.

Product family

- Domo Cubicle p.102
- Domo Table p.88
- Domo Wall p.60
- Domo Wall Booth p.104



Absorption



Attenuation

Design
Stefan Borselius



Scala Floor

Scala is a playful paraphrase on corrugated iron that simultaneously employs the functionality of the shape. "The inspiration comes from the many houses in Iceland, where not only the roofs, but the facades too, are covered by corrugated iron. It gave birth to the idea of bringing it into the space", explains award-winning designer Anya Sebton. The design of the sound-absorbent Scala is not only developed for visual reasons, but primarily to contribute to a softer soundscape.

Product family

- Scala Ceiling p.38
- Scala Mobile table screen p.91
- Scala Suspended p.120
- Scala Table p.90
- Scala Wall p.56
- Scala XL p.52



Absorption



Attenuation



Diffusion

Design
Anya Sebton





Soneo Floor

Firmly focussed on room acoustics, Soneo is a series of highly functional free-standing and desk-mounted screens that comes into their own in challenging acoustic conditions. The screens provide an effective means of creating a pleasant working environment by lowering noise levels and enhancing privacy. They can also be equipped with inconspicuous storage accessories made of transparent acrylic, making it easier to keep desks orderly and free of clutter. Soneo screens are 100% recyclable.

Family

- Soneo Cubicle p.108
- Soneo Table p.94
- Soneo Wall p.66



Absorption



Attenuation

Stitch Floor





Stitch is a soft and cosy-looking, sound-absorbent screen upholstered in thick, padded fabric with grid-patterned stitching, and mounted on finely made ash wood legs. Inspired by sofas, cushions and down-filled jackets, Stefan Borselius's aim in designing Stitch was to make often hard and angular public spaces more welcoming by adding an element of human warmth. For the same reason, Stitch is equally suited to home environments. Needless to say, its design language also delivers excellent acoustic properties.



Absorption



Attenuation

Design
Stefan Borselius

Product family
● Stitch Table p.96

Softline Table



Desk Screens

**Domo Table, Scala Table,
Scala Mobile table screen, Softline
Table, Soneo Table and Stitch Table**



Domo Table's elegantly bevelled edges produce an attractive interplay of light and shadows. The table screen is filled with sound-absorbing material and upholstered in fabric. A magnetic bracket can be added to the screen's facade for attaching pen holder and shelving accessories of various sizes, all specially designed for Domo by Borselius.



Absorption



Attenuation

Design
Stefan Borselius

Product family

- Domo Cubicle p.102
- Domo Floor p.81
- Domo Wall p.60
- Domo Wall Booth p.104

Domo Table



Scala Table

Scala is a playful paraphrase on corrugated iron that simultaneously employs the functionality of the shape. "The inspiration comes from the many houses in Iceland, where not only the roofs, but the facades too, are covered by corrugated iron. It gave birth to the idea of bringing it into the space", explains award-winning designer Anya Sebtón. The design of the sound-absorbent Scala is not only developed for visual reasons, but primarily to contribute to a softer soundscape.

Product family

- Scala Ceiling p.38
- Scala Suspended p.120
- Scala Wall p.56
- Scala XL p.52



Absorption



Attenuation

Design
Anya Sebtón





Scala Mobile table screen

Scala Mobile table screen can easily be moved from one table to another. Perfect for temporarily delimiting at a community table or at the home office. Choose between black or white foot. Available in 603, 754 and 1207 mm lengths.



Absorption

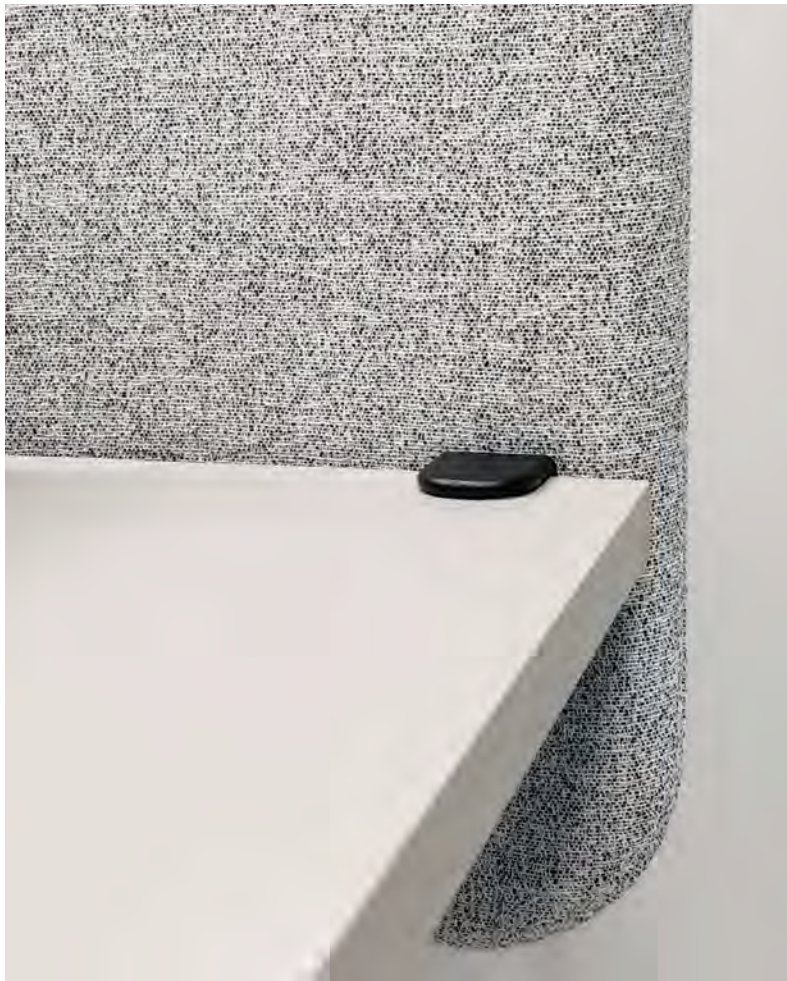


Attenuation

Design
Anya Sebton

Softline Table





Create a functional acoustic environment in your office with Softline table screens! The table screen consists of a sound-absorbent filling mounted within a solid wood frame. The screen is upholstered with fabric on both sides.



Absorption



Attenuation

Product family

• Softline Cubicle p.110

• Softline Floor p.80

Soneo Table





Firmly focussed on room acoustics, Soneo is a series of highly functional free-standing and desk-mounted screens that comes into its own in challenging acoustic conditions. The table-screen provide an effective means of creating a pleasant working environment by lowering noise levels and enhancing privacy. They can also be equipped with inconspicuous storage accessories made of transparent acrylic, making it easier to keep desks orderly and free of clutter. Soneo screens are 100% recyclable.



Absorption



Attenuation

Product family

- ◆ Soneo Cubicle p.108
- ◆ Soneo Floor p.83
- ◆ Soneo Wall p.66

Stitch Table



Product family
● Stitch Floor p.84



“It softens both the
soundscape and
the visual environment.”

Stitch is a soft and cosy-looking, sound-absorbent screen upholstered in thick, padded fabric with grid-patterned stitching, and mounted on finely made ash wood legs. Inspired by sofas, cushions and down-filled jackets, Stefan Borselius's aim in designing Stitch was to make often hard and angular public spaces more welcoming by adding an element of human warmth. For the same reason, Stitch is equally suited to home environments. Needless to say, its design language also delivers excellent acoustic properties.



Absorption



Attenuation

Design
Stefan Borselius

Cubicles

dB Cubicle, Domo Booth,
Domo Wall Booth, My Hive,
Soneo Cubicle and
Softline Cubicle





dB Cubicle





dB is a screen system that serves as a discreet scenery set for open office environments and designed to be brought to life by the people who work there. Thomas Bernstrand's aim in designing dB was to enable people to make an impression on their surroundings – to cast the individual as a co-creator. The screens can thus be upholstered in any fabric, and the series includes a whiteboard-faced screen, a cork-faced screen for bulletins, and a range of clever accessories to accommodate photos, magazines and other personal items. Bernstrand's reputed mischievousness as a designer shows up in the form of an optional flower pot, balanced improbably on the top edge of the dB screen. dB includes a height-adjustable table featuring the noise-dampening Strata table top.



Absorption



Attenuation

Design
Thomas Bernstrand

Product family

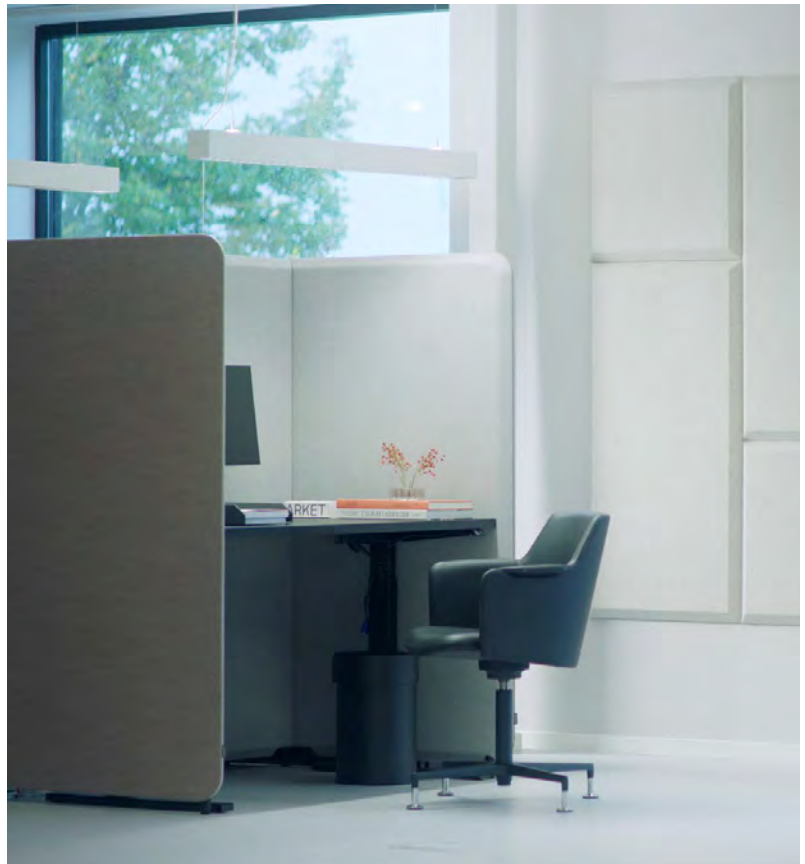
● dB Floor p.78

● dB Modular Sofa p.114

● dB Pillar p.116

Domo Cubicle





Thanks to Stefan Borselius's renowned attention to detail, Domo is an uncommonly elegant screen system that is easy to work with in better adapting a space to privacy needs and in creating a tranquil soundscape. The screens' elegantly bevelled edges give rise to a beautiful interplay of light and shadows, which defines Domo's understated dynamic.



Absorption



Attenuation

**Design
Stefan Borselius**

Product family

- Domo Floor p.81
- Domo Table p.88
- Domo Wall p.60
- Domo Wall Booth p.104

Domo Wall Booth



Product family

- Domo Cubicle p.102
- Domo Floor p.81
- Domo Table p.88
- Domo Wall p.60



"Creates secluded
oases in the open."

It's sometimes difficult to know where to go when you need a quiet, private space to write or make a quick phone call. Domo Wall Booth was designed to solve this problem in busy, hectic environments.



Absorption



Attenuation

Design
Stefan Borselius

My Hive

"Hexagon-shaped workstations
create dynamic settings
and free up space."





Design
Poul Christiansen

Born in 1947 and educated as an architect at the Royal Danish Academy of Fine Arts, Poul Christiansen made his breakthrough in the late sixties when he began working on his iconic lamp series for Le Klint.



The hexagon is a shape often found in nature – from the structural patterns of turtle shells to honeycomb cells. Here, designer Poul Christiansen has employed the hexagon to create dynamic workstation clusters for office spaces with limited space. The My Hive workstation's tabletop is space-savingly integrated with sound-absorbing partitions, thus enhancing the unit's overall elegance.



Absorption



Attenuation

Soneo Cubicle



Product family

- Soneo Floor p.83
- Soneo Table p.94
- Soneo Wall p.66



"Screens that are
functional,
yet discreet."

Firmly focussed on room acoustics, Soneo is a series of highly functional free-standing and desk-mounted screens that comes into their own in challenging acoustic conditions. The screens provide an effective means of creating a pleasant working environment by lowering noise levels and enhancing privacy. They can also be equipped with inconspicuous storage accessories made of transparent acrylic, making it easier to keep desks orderly and free of clutter. Soneo screens are 100% recyclable.



Absorption



Attenuation

Softline Cubicle

"A classic screen system that blends in anywhere."

Softline is a timelessly designed screen that absorbs noise effectively and creates a more pleasant soundscape. It is characterised by a design language of "little gestures" – like its rounded corners, which contribute to an inviting and friendly atmosphere. Softline is highly compatible with other furnishings and blends in beautifully in most settings. To add a personal touch, you can choose from a wide range of colours!



Absorption



Attenuation



Product family

● Softline Floor p.80

● Softline Table p.92





dB Modular Sofa

Acoustic Furniture

dB Modular Sofa and dB Pillar



dB Modular Sofa





The new dB Modular sofa is soft, and welcoming. It creates perfect conditions for a pleasant soundscape. The product is designed by Thomas Bernstrand to make public spaces and work spaces less rigid, and more adaptable. Textile waste from Abstractas own factory is used as acoustic filling. Thus, both the environmental footprint and the level of low-frequency noise are reduced.



Absorption



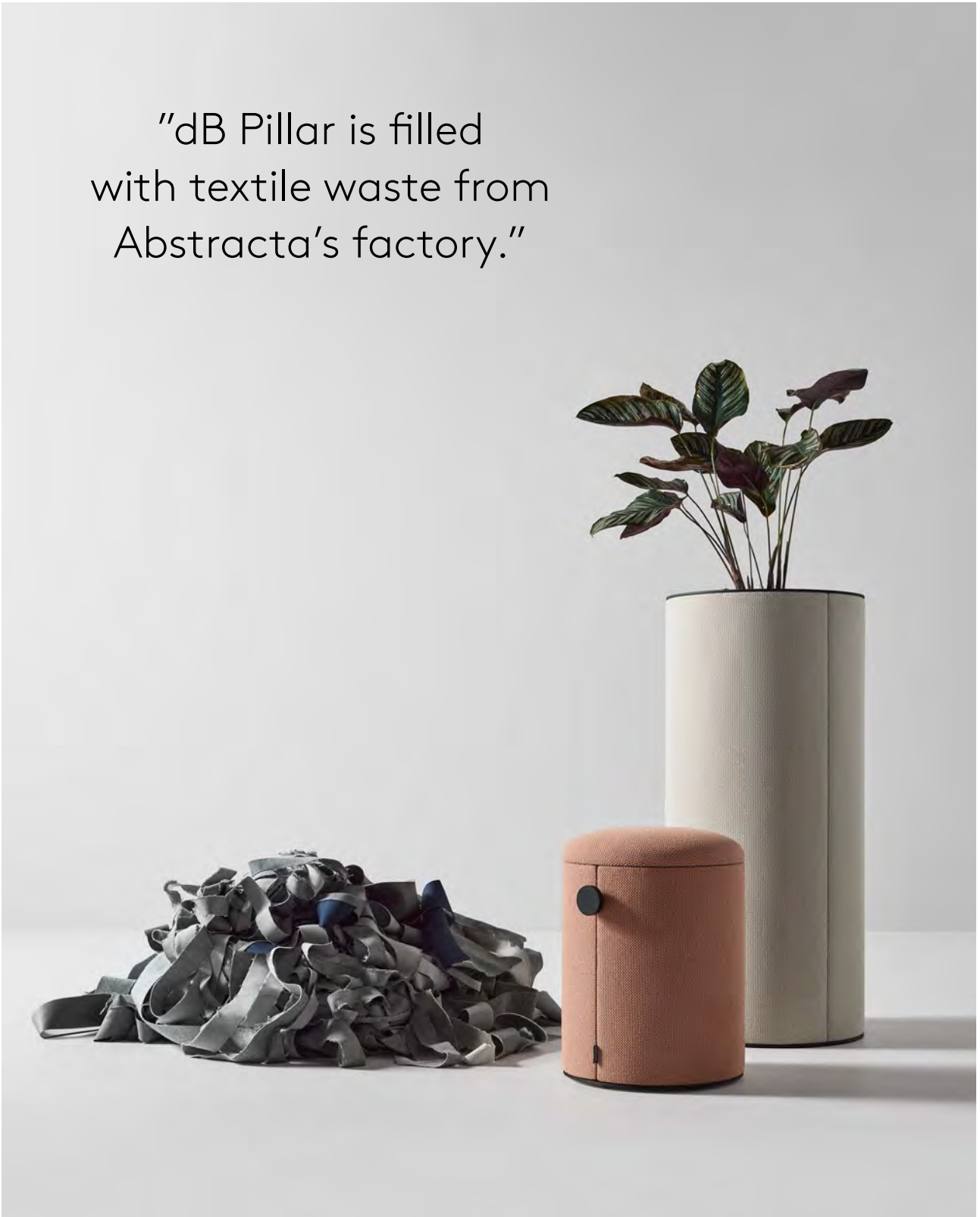
Attenuation

Design
Thomas Bernstrand

Product family
 ● dB Cubicle p.100
 ● dB Floor p.78
 ● dB Pillar p.116

dB Pillar

"dB Pillar is filled
with textile waste from
Abstracta's factory."





dB Pillar works wonders for the soundscape. In combination with the material, the design of the product gives it unique acoustic features. It radically reduces the levels of low frequency noise, that most products fail to deal with.



Absorption

Design
Thomas Bernstrand

Product family

● dB Cubicle p.100

● dB Floor p.78

● dB Modular Sofa p.114

Ceiling Baffles & Ceiling Panels

Scala Suspended, Basic Baffle
and Sky Ceiling



Scala Suspended





"A perfectly simple interaction
between material and form."

Scala is a playful paraphrase on corrugated iron that simultaneously employs the functionality of the shape. "The inspiration comes from the many houses in Iceland, where not only the roofs, but the facades too, are covered by corrugated iron. It gave birth to the idea of bringing it into the space", explains award-winning designer Anya Sebtón. The design of the sound-absorbent Scala is not only developed for visual reasons, but primarily to contribute to a softer soundscape.



Absorption



Attenuation

Design
Anya Sebtón

Product family

- Scala Ceiling p.38
- Scala Floor p.82
- Scala Mobile table screen p.91
- Scala Table p.90
- Scala Wall p.56
- Scala XL p.52

Basic Baffle





“ Efficient sound absorber
for ceilings.”

Use baffles to effectively dampen sound in rooms with high ceilings! The sound absorbing raw core is made out of polyester derived from recycled PET. Basic Baffles are available homogeneously in raw material, known as “Soundfelt”. Soundfelt can also be covered with fabric where the Soundfelt core can be seen at the edges. A wire kit for ceiling mounting is included.

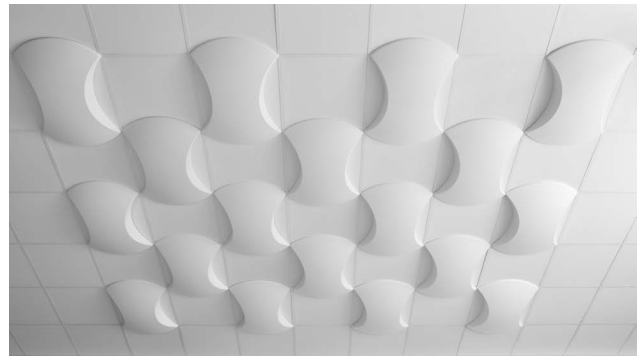
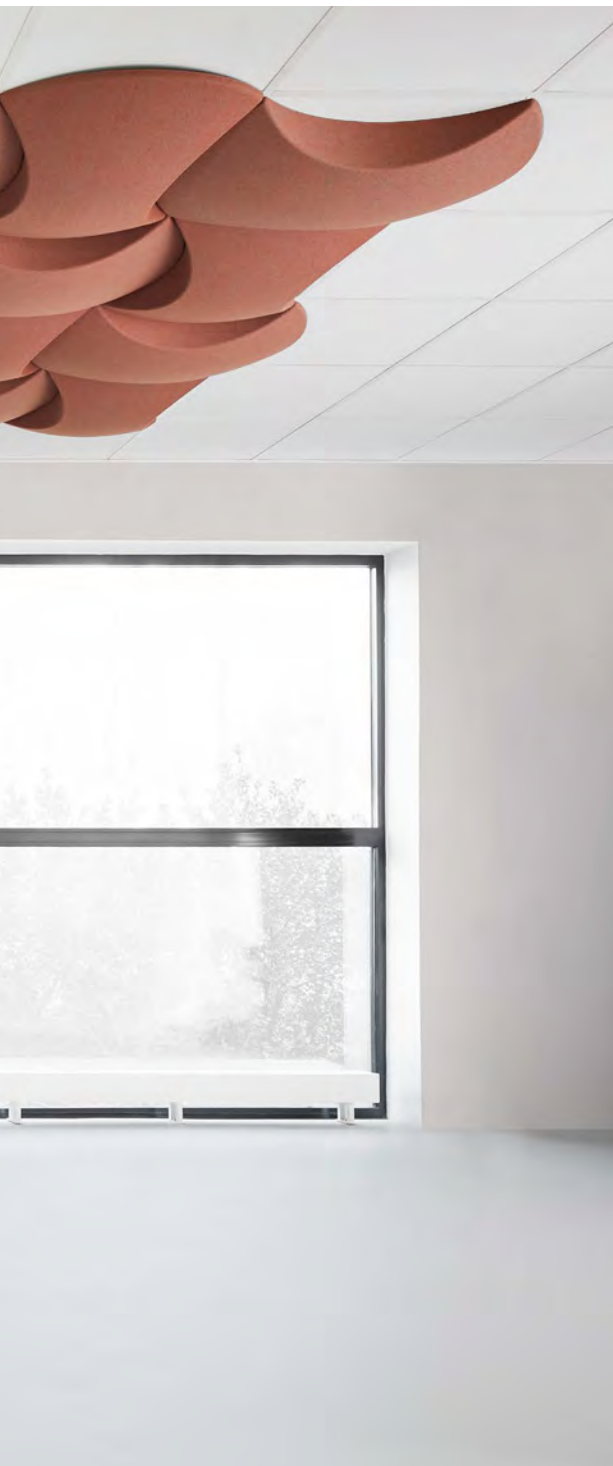


Absorption

Sky Ceiling



Product family
● Sky Wall p.64



Inspired, featureless ceilings compromise the overall impression made by far too many interior environments. Sky, a modular system developed by Abstracta and designer Stefan Borselius, sets out to change this with a design language that imbues a room with visual energy while improving its soundscape.



Absorption

Design
Stefan Borselius



Writing Boards

Draft, Alumi Combi, MagVision,
Moow, Sketchalot, Uniti and VIP



Draft





Design Tengbom architects

The Stockholm Concert Hall, the Swedish Embassy in Moscow, and Dockan in Malmö are just some of the well-known buildings that Tengbom architects have designed. Tengbom architects also design furniture with the same sensitivity to today's and tomorrow's needs that they apply to the task of designing buildings. For Abstracta they engineered Draft, a highly versatile whiteboard.



The mobile writing board Draft is developed with the needs of the contemporary, creative office in mind. It has a generous magnetic surface for writing (e3), and an anthracite grey steel frame equipped with lockable castors. The design is simplistic, almost graphic. Below the writing surface is a wood-framed tool tray in natural oak or anthracite grey stain. Draft is available in two versions – one with a writing board on both sides, and one with a writing board on the one side, and a beautiful corkboard on the other.

Alumi Combi

Family

● Alumi Floor p.76

Alumi is an understated, versatile series of sound-absorbing screens by Nina Jobs. Available in several colours and discreet patterns, the screens are elegantly framed with an aluminium profile. Their interior consists of a noise-dampening material that creates a comfortable soundscape. Alumi Combi and Alumi Combi Light are smart floorscreens with a writing surface on one side and felt on the other. The whole family consists of following products: Alumi Floor screen, Alumi Combi and Combi Light.



Absorption



Attenuation

Design
Nina Jobs





MagVision

MagVision is a highly functional and innovatively useful writing board consisting of a sheet of float glass mounted on magnetised metal. In its basic version, the glass surface is white. For those, however, who wish to use MagVision as a decorative accent, choose from our eight different shades or pick your own NCS colour, its offered on request. A pen shelf in two different sizes is available as an accessory.



Moow

Developed by Stefan Borselius, Moow is an innovative concept that, at first glance, reminds one of bed sheets drying on the line. But hanging here on a rail are whiteboards of different sizes, easily slid right and left on their wheels. The concept also includes hooks for hanging flipcharts and wall-mounted static whiteboards.

The Moow whiteboard can be directly fitted to the wall. The tall hanging version of the whiteboard can also be used solitary standing on its wheels leaning against a wall. Another clever idea is to put a monitor screen on the wall behind a movable whiteboard.

Design
Stefan Borselius

Sketchalot

Sketchalot is unique as a whiteboard in that it can stand perfectly flat against the wall without actually being fastened to it – thanks to its specially designed feet. So, when it's time to rearrange the office again, there's no need to worry.



Design
Eelco Voogd

Dutch designer and entrepreneur Eelco Voogd has a background in the automotive sector, where he worked in marketing and design. Today, his work in the latter field ranges from design management to creating furniture and interior office concepts – often with the purpose of stimulating collaboration. Sketchalot, which Voogd designed for Abstracta, is one such product.

Uniti

Uniti is a high-quality whiteboard available in many sizes. Its magnetised e3 enamel surface is framed in silver or white anodised aluminium. Uniti is available with wall brackets or mounted on a wheeled stand.





Design
Friis & Moltke

VIP

VIP elegantly unifies the essential equipment of any conference room. The character of the VIP system is very straight forward and made with a 60-mm wide frame on all the products. It consists of a 60-mm wide rail for hanging a wide variety of boards. The writing boards are equipped with a ledge for markers.

Ever since its inception in 1954, Friis & Moltke has been aiming to recreate Danish architecture and design. The studio managed a breakthrough in the 60's with a somewhat humane version of brutalism. Since then, they have been a leading player on Denmark's architecture and design scene.

Showrooms

Stockholm, Sweden

Abstracta AB
Adolf Fredriks Kyrkogata 15
111 37 Stockholm
+46 70 239 22 60
+46 70 812 72 92

Malmö, Sweden

Skeppsbron 3
211 20 Malmö
+46 73 342 77 39

Gothenburg, Sweden

Studio L6
Lasarettsgatan 6
411 19 Göteborg
+46 31 13 83 90

Copenhagen, Denmark

Danneskiold-Samsøes Allé 15 st. th
1434 København K
+45 31 10 57 16

Paris, France

AFC Agence Frédéric Cabantous
5 bis, rue Gabriel Laumain
75010 Paris
+33 0142 50 42 66

Aschaffenburg, Germany

Ludwigstraße 7
63739 Aschaffenburg
+49 152 52 369 422

Neustadt in Holstein, Germany

Werftstraße 9
23730 Neustadt in Holstein
+49 172 71 22 063

Woerden, Holland

All Art Kwast Agencies
Polanerzandweg 1
3446CC Woerden
+31 348 44 33 23

Milan, Italy

Forum Progetti srl
Via Magolfa 21
20143 Milano
+39 02 583 06 069

Oslo, Norway

Pilestredet 75c, inngang 38
0354 Oslo
+47 482 44 198

London, UK

3 Albemarle Way
Clerkenwell London
EC1V 4JB
+44 7939 28 74 52

Head office

Postal address

Abstracta AB
Box 75
363 03 Lammhult

+46 472-26 96 00
info@abstracta.se
www.abstracta.se

Visitor address

Lammengatan 2
363 45 Lammhult

Sales support

+46 472-26 96 50
order@abstracta.se
sales@abstracta.se

A modern interior scene featuring a blue armchair with a chrome frame, a wooden slatted wall, a colorful abstract painting, and sheer white curtains. The text "We create better soundscapes." is overlaid in the center.

We create better soundscapes.

abstracta.se