

FINN CHAIR

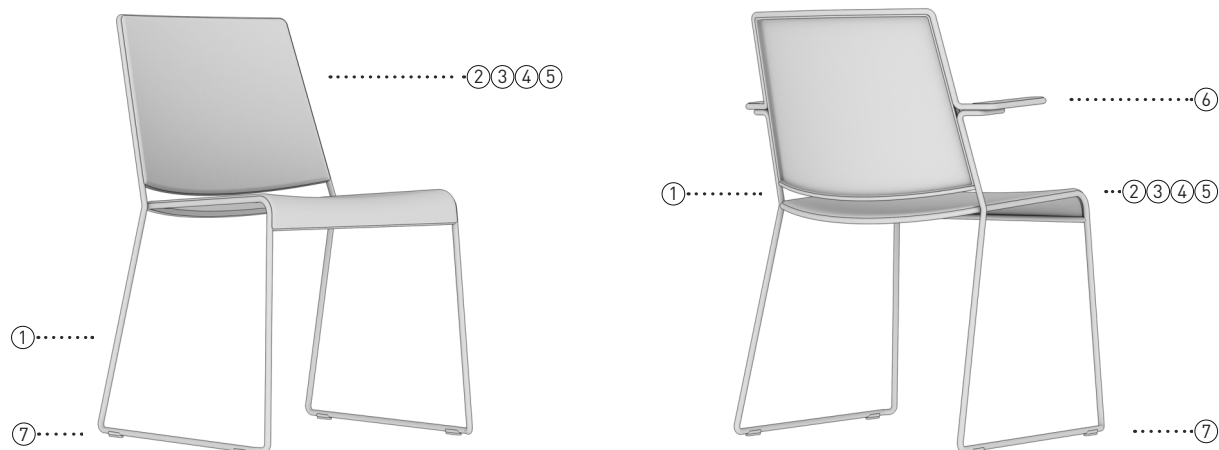


Design story

Sturdy, stackable, suitable for conference rooms, meeting and training rooms, universities and libraries, cafeterias and waiting areas. Finn is a "no thrills" chair in step with the times: a performing product that offers comfort and practicality, able to adapt to the new challenges of the contract and conference seating environments that require maximum flexibility. Finn Chair is made of a distinctive steel rod structure with a very reduced cross-section that traces sinuous and elegant, yet extremely functional, shapes.

Finn Chair is made of a steel rod structure, with chromed or painted finish, that frames all around the seat and backrest shells. The shells are available in polypropylene, polyurethane, veneer or upholstered in fabric or leather. The chair is available with and without armrests, also in the stool variant. The seating collection is available in a wide range of colors. The chair without armrests allows you to stack up to 45 chairs with a special trolley on wheels or 25 chairs self-sit.

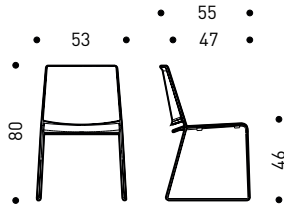
Specifications



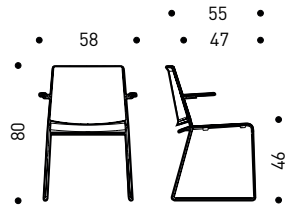
- ① **Structure and base:** The structure with skid base in steel rod, diam. 11 mm, is a rigid structure able to maintain its shape even under conditions of considerable stress and that fixes the shells of the seat and backrest. Available with low or high back, with chromed or painted finish in different colors e in the Stool version.
- ② **Seat and backrest in nylon:** Made of thermoplastic nylon resin, available on request in fire-retardant version. The surface finish has a characteristic slightly embossed texture. The seat and backrest are easily replaceable on site. Available in different standard colors also in combination with the painting of the steel structure.
- ③ **Seat and backrest in integral polyurethane :** Polyurethane is a soft and slightly padded material. The surface finish has a characteristic slightly embossed texture. The seat is reinforced with an internal steel mesh. The seat and backrest are easily replaceable on site. Available in different standard colors also in combination with the painting of the steel structure.
- ④ **Seat and backrest in wood :** Wood-veneered shell, total thickness 12 mm, with matt transparent lacquered finish on both sides.

- ⑤ **Seat and backrest in fabric or leather:** The seat and backrest upholstery is in fabric, leather or eco-leather. The armrests are covered in the same material as the backrest.
- ⑥ **Armrests:** Open shaped armrests integrated in the steel structure, they are made of nylon, polyurethane, wood or covered in fabric or leather in combination with the finish of the seat and back shells. Also available without armrests.
- ⑦ **Glides:** In black nylon, with felt floor support element available on request.
- Stackability:** Depending on the models, stackable up to 40 chairs with a special trolley on wheels.
- Accessories:** Stacking trolley in coated steel tubular sections. Black color, with castors for any type of flooring, two of which are directional castors with brakes. Optional writing tablet in black plastic, dimension 356x250 mm.

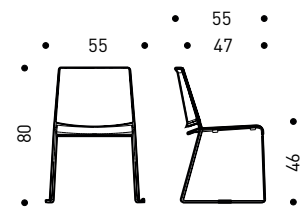
Dimensions



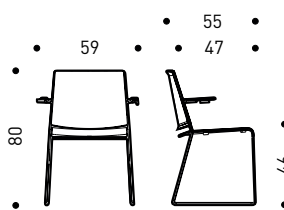
FNN.500 | chair on skid base without arms slitta



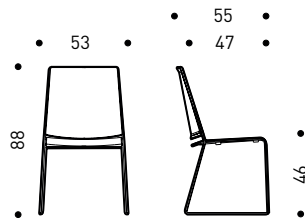
FNN.550 | chair on skid base with arms



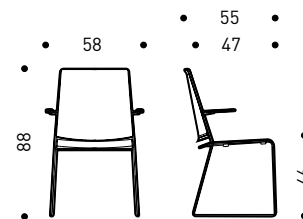
FNN.505 | chair on skid base without arms, with linking unit



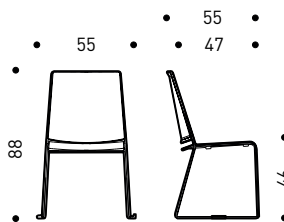
FNN.555 | chair on skid base with arms, with linking unit



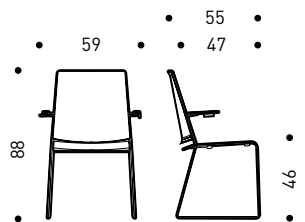
FNN.520 | chair on skid base without arms



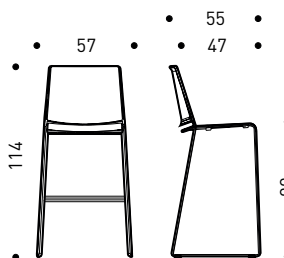
FNN.570 | chair on skid base with arms



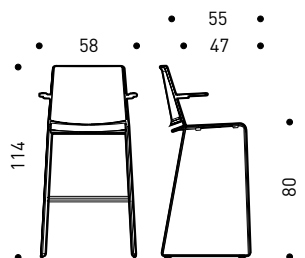
FNN.525 | chair on skid base without arms, with linking unit



FNN.575 | chair on skid base with arms, with linking unit



FNN.600 | stool on skid base without arms



FNN.650 | chair on skid base with arms

Colors & finishes

Structure

Steel



55 | Chromed

Painted steel



115 | Black



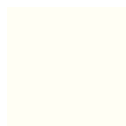
030 | Aquamarine



P01 | Sand



095 | Grey



100 | White



P03 | Dark blue
(glossy)



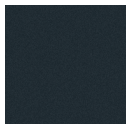
R07 | Yellow
(glossy)



R06 | Red
(glossy)

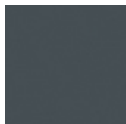
Seat, armrests and backrest

Nylon



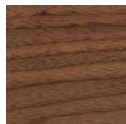
P | Nylon
(5 colors)

Polyurethane



U | Poliuretano
(7 colors)

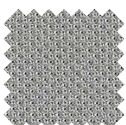
Veener



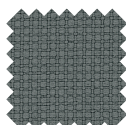
M | Veener
(2 colors)

Seat and backrest upholstery

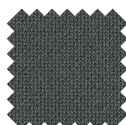
Fabric



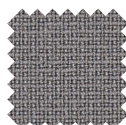
Cat. B | Atlantic
(14 colors)



Cat. B | Relax Flex
(10 colors)



Cat. C | Cura
(8 colors)



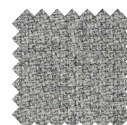
Cat. C | Fame
(7 colors)



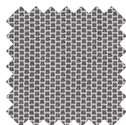
Cat. C | Sotega
(10 colors)



Cat. C | Step
(8 colors)



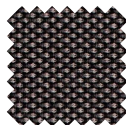
Cat. C | Step Melange
(8 colors)



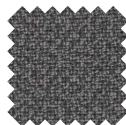
Cat. C | Swing
(13 colors)



Cat. F | Breeze
(9 colors)



Cat. F | Breeze fusion
(8 colors)



Cat. F | Fame Hybrid
(4 colors)

Leather



Cat. E | Leather
(18 colors)