

MINI

Mini is an elastic three-dimensional fabric made with the non-flammable yarn Trevira CS.



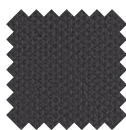
Specifications

- **Category B**
- **Composition** | 100% Trevisa CS
- **Weight** | 480 g/lm - 340 gr/m²
- **Width** | 140 cm
- **Abrasion** | Martindale 100.000 turns EN ISO 12947-2
- **Pilling** | Grade 4-5 EN ISO 12945-2
- **Light fastness** | Grade 5-8 EN ISO 105-B02
- **Rubbing fastness** | Grade 4-5 EN ISO 105x12
- **Flammability** | UNI 9174 - 8456 Class C1; UNI 9175 Class 1 IM; DIN 4102 Class B1; NF 92501-7 Class M1; NF D 60013 Class AM18; EN 1021-1 & 2; BS Crib 5; BS 7176 Class Medium Hazard; EN 13773 Class 1; OENORM 3800-1 Class B1,Q1,TR1; California TB117; USA NFPA 701; USA NFPA 260; IMO Part 8 Upholstery
- **Environment** | 100% recyclable polyester
- **Labelling** | STANDARD 100 by OEKO-TEX®, EU Ecolabel®, Trevira CS®
- **Maintenance** | Brush any substantial, encrusted marks by hand, using a brush or spatula, then vacuum clean. Pre-clean with a neutral universal agent (incl. Possibility dry foam as well). After each cleaning remove any residual surfactant, using spray extraction.
- **Colours availability** | 7 standard colours - 51 total colours

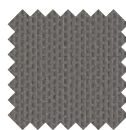
Colour scale



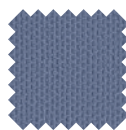
28A | Black



28F | Dark grey



28E | Grey



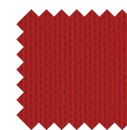
28C | Light blue



28D | Green



28H | Cadmium yellow



28B | Red

