

CAMPIONARIO SAMPLES

MATERIALI

MATERIALS

LEGNO WOOD

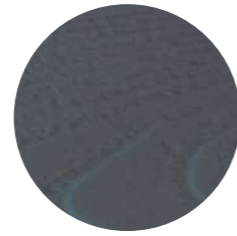
FRASSINO | ASH



Frassino
Ash



Frassino Nero
Black Ash



Frassino Antracite
Anthracite Ash



Frassino Tinto Rovere
Ash Stained Oak



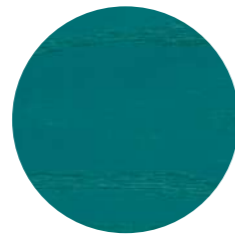
Frassino Tinto Noce
Ash Stained Walnut



Anilina Nera
Black Aniline



Anilina Bianca
White Aniline



Anilina Verde Veronese
Veronese Green Aniline



Anilina Rosso Marsala
Marsala Red Aniline

ROVERE | OAK



Rovere Fiammato
Flamed Oak



Rovere Vintage
Vintage Oak



Rovere Termotrattato
Heat-Treated Oak

NOCE | WALNUT



Noce Canaletto
Canaletto Walnut

FAGGIO | BEECH



Faggio
Beech

IROKO | IROKO



Iroko
Iroko

Se l'uomo è composto dal 65% di acqua, Miniforms è composta dal 65% di legno. Ci piace pensare di essere come Ceppetto e dare vita al legno, perché è troppo facile rimanere immobili, oggi.

I legni che utilizziamo provengono da zone di riforestazione, quelle del centro Europa per il frassino e il rovere, e quelle dei territori americani per il noce. Sono legni di prima scelta, raccolti e lavorati per invecchiare bene.

Per l'impiallacciatura preferiamo fogli spessi, che consentono di avere una quantità di materiale maggiore. Facciamo sentire il corpo del legno: i pori sono profondi e le venature creano disegni accentuati.

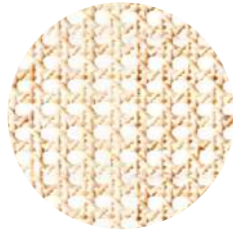
Just as humans are 65% water, Miniforms are 65% wood. We like to think that we are like Ceppetto, giving life to the wood, because nowadays it is too easy to stand still.

The wood that we use comes from areas of reforestation: in central Europe in the case of ash and oak, and in the Americas for walnut. These are top-quality woods, harvested and processed to age well.

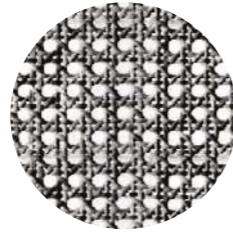
For our veneers we prefer thick sheets, which offer a greater quantity of material. We want you to feel the body of the wood: the pores are deep and the grains create strong patterns.



PAGLIA DI VIENNA VIENNA STRAW



Paglia di Vienna
Vienna Straw



Paglia di Vienna Nera
Black Vienna Straw

Abbiamo sentito dire che una volta si impagliavano le sedie al mercato, in cerca di clienti. I nostri artigiani, invece, ci hanno confessato con orgoglio che hanno cominciato in un piccolo garage, come Steve Jobs.

Per quanto rimandi al passato, la paglia di vienna è decisamente attuale e ha mantenuto inalterate le sue caratteristiche per tutto questo tempo. Si ricava dalla canna d'India e prima di applicarla va immersa in una vasca d'acqua, che ne mantiene la naturale elasticità.

We are told that in the past chairs were recaned at the market, so as to drum up more customers. Our craftsmen, instead, proudly tell us that they began working in small garages, like Steve Jobs.

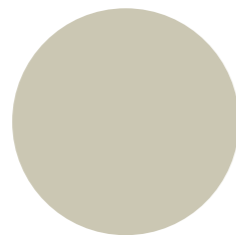
As much as it is reminiscent of the past, cane webbing is very much in vogue, and has maintained its characteristics unchanged in all these years. It is made of rattan, and before application it has to be soaked in a basin of water, to help maintain its natural elasticity.



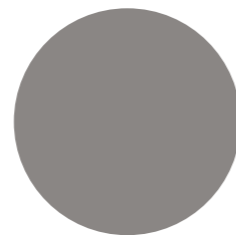
LACCATI LACQUER



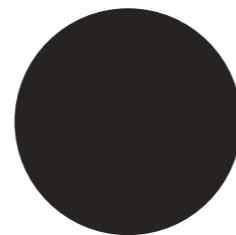
Bianco
White
RAL: 9016



Crigio Seta
Silk Gray
RAL: 7044



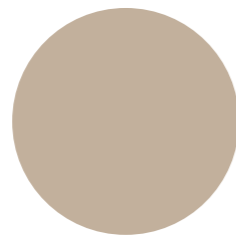
Crigio Polvere
Dusty Gray
RAL: 7037



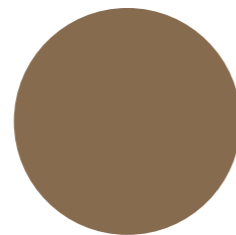
Nero
Black
RAL: 9005



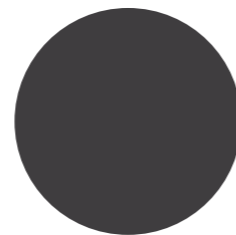
Canapa
Canapa
NCS 1502-Y



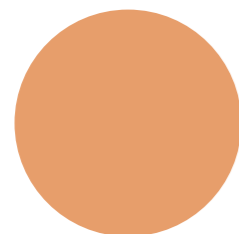
Juta
Juta
NCS 3005-Y20R



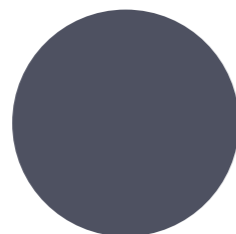
Visone
Visone
NCS 6010-Y60R



Antracite
Anthracite
RAL: 7016



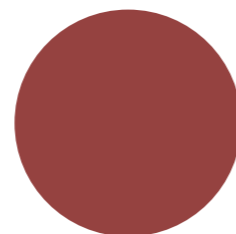
Albicocca
Apricot
NCS S2030 40R



Blu Intenso
Intense Blue
NCS S-6020 R-80B



Verde Veronese
Veronese Green
NCS S-5040 B-50C



Rosso Marsala
Marsala Red
NCS S4040R

In Miniforms, esaltiamo l'autorità del colore. Proponiamo una palette eclettica, che si estende dalle tonalità neutre a quelle funky.

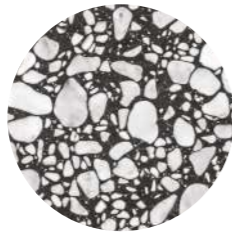
Utilizziamo laccati opachi, estremamente più resistenti e robusti dei lucidi. Ai piani dei tavoli, inoltre, applichiamo un vetrificante per renderli adatti ad affrontare le sfide di tutti i giorni.

At Miniforms, we heighten the authority of colour. We present an eclectic palette, ranging from neutral tones to funky hues.

We use matt lacquers, which are far more resistant and robust than glossy ones. For table tops, we also add a layer of glaze to ensure they can handle the challenges of everyday life.



MARMO MARBLE



Palladio Moro
Palladio Moro

Il marmo, quello vero, si produce a Verona. Palladio Moro nasce in una cava del veronese, a 800 metri di quota, in un'area geografica storica per la produzione di marmo. Come nel Terrazzo, il Palladio Moro si ottiene mescolando delle graniglie di marmo, in questo caso due: ciottoli bianchi dalle forme organiche macchiano un singolo layer nero. Il risultato è un pattern macro e intenso, dove ogni texture che si crea dalla miscela è irripetibile.

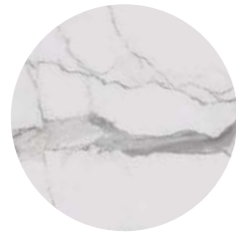
Palladio Moro è un agglomerato composto dal 95% di marmo. Il restante 5% è occupato dalle resine, che lo rendono ancora più resistente all'abrasione, alla flessione e all'urto. I ciottoli bianchi poi, sono ottenuti utilizzando pietre grezze, residui degli scavi rocciosi locali, creando un processo industriale che riesce a eliminare gli sprechi e limitare i danni alle nostre montagne.

Palladio Moro is extracted in a Veronese quarry, at an altitude of 800 meters. This is the area where high-quality marble arises. Like the Terrazzo, Palladio Moro is made by a mix of marble granules: white organic shaped pebbles cover a single black layer. The outcome is a macro and intense pattern, generated each time by an unrepeatable mixture.

Palladio Moro is an agglomerate made of 95% of marble. The remaining 5% is a mixture of resins, which make it even more resistant to abrasion, bending and impact. The white pebbles are then obtained by working local excavations residues, starting up a circular process to eliminate the wastefulness and limit the damage to our mountains.



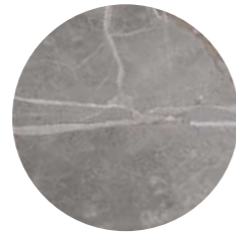
GRES PORCELLANATO PORCELAIN STONEWARE



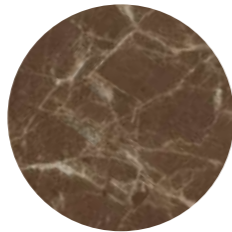
Statuario Bianco
Statuario White



Thundernight
Thundernight



Étoile Cris
Étoile Cris



Emperador
Emperador

Reinterpretiamo i marmi utilizzando il Gres Porcellanato, un materiale che, non avendo pori, resiste in modo ideale agli imprevisti quotidiani. Abbiamo scelto quattro essenze iconiche dai toni indispensabili, accoppiate a lastre da 6mm, colorate in massa e con una superficie opaca.

We reinterpret marble using porcelain stoneware, a material that is non-porous, and is hence ideal to cope with life's little accidents. We have chosen four iconic styles in classic tones, created using laser technology on 6-mm stoneware, mass-coloured and with a matt surface.

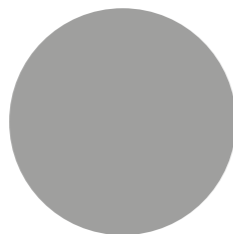


CERAMICA CERAMIC

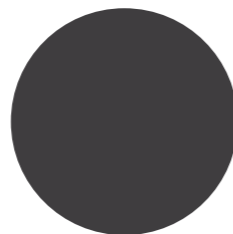
OPACA | MATT



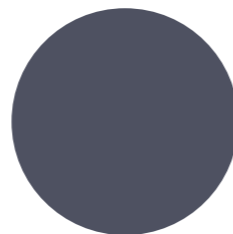
Bianco
White
RAL: 9016



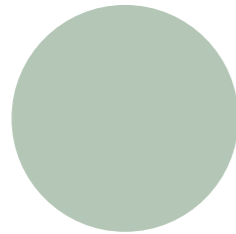
Grigio Finestra
Window Gray
RAL: 7040



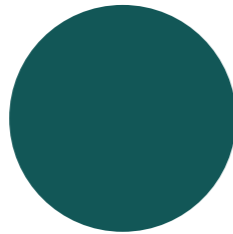
Antracite
Anthracite
RAL: 7016



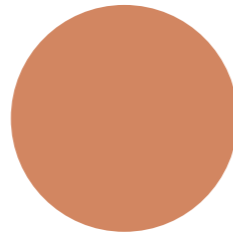
Blu Intenso
Intense Blue
NCS S-6020 R-80B



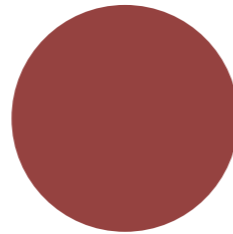
Ciada
Jade
NCS S2010C



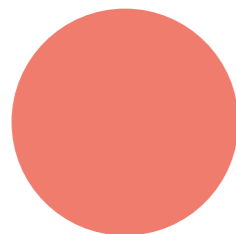
Verde Veronese
Veronese Green
NCS S-5040 B-50C



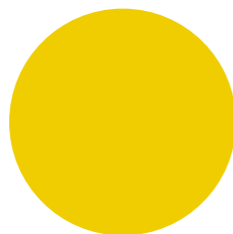
Beige
Beige Red
RAL: 3012



Rosso Marsala
Marsala Red
NCS S4040R



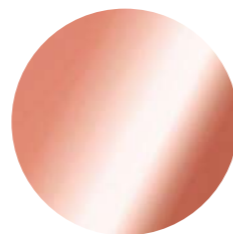
Corallo
Coral
NCS S1050-Y80R



Giallo
Yellow
RAL: 1021

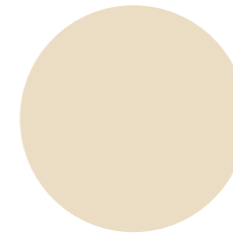


Oro
Gold

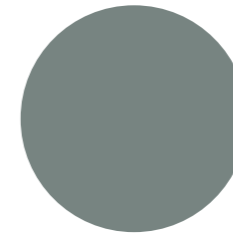


Rame
Copper

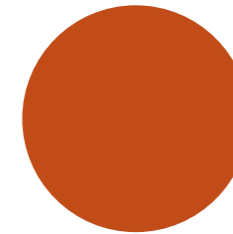
CERAMICA SMALTATA | GLAZED CERAMIC



Crema
Crema



Peltro
Peltro



Terracotta
Terracotta

Se il marmo si estrae a Verona, la ceramica si produce a Nove, in antichi laboratori. Si lavora con le mani, quando l'argilla è ancora morbida e malleabile, poi la si lascia cuocere, un processo irreversibile che la rende solida e resistente.

La ceramica è un materiale che si fa sentire. Noi la proponiamo sia opaca che smaltata lucida, in tonalità diverse e complementari. Quella opaca ha una texture materica ed omogenea, mentre la lucida ha una mano liscia che lascia vibrare il colore.

Ogni oggetto realizzato in ceramica è unico ed armonico. Ha un valore artistico fortemente percepito, esaltato dall'irregolarità artigianale.

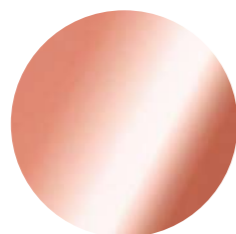
Marble is quarried in Verona, but ceramics are produced in Nove, in historic workshops. It is worked by hand, while the clay is still soft and malleable, then it is fired, an irreversible process that makes it solid and durable.

Ceramic is a highly tactile material. We offer both matt and shiny glazed versions, in a range of complementary tones. Matt ceramics have an even, textured surface, while glossy ceramics have a smooth feel that makes the colour more vibrant.

Each ceramic piece is unique and harmonious. It has a strongly perceptible artistic value, enhanced by its handcrafted irregularities.



METALLO METAL



Rame
Copper



Oro Rosa Opaco
Rose Gold Matt



Bronzè
Bronze

Utilizziamo i metalli per descrivere dettagli inaspettati. Il rame è ottenuto immergendo il metallo in un bagno galvanico, un processo che ne aumenta la resistenza all'usura. Estremamente liscio, dona luminosità all'oggetto.

Loro rosa opaco e il bronzè invece, sono due tipologie di vernici opache estremamente coprenti che vengono applicate a superfici spazzolate.

We use metal to bring out unexpected details. The copper is obtained by immersing the metal in an electroplating bath, a process that increases wear resistance. Its remarkable smoothness adds brightness to any piece.

The matt pink and bronzed gold are, instead, two types of paint that are used on brushed surfaces to give great cover.



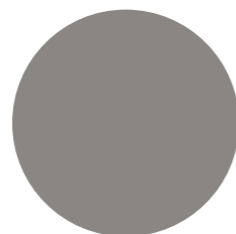
FENIX FENIX



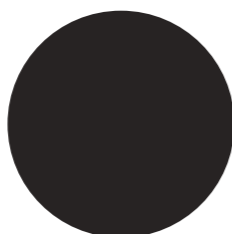
Bianco Malè
White Malè



Grigio Efeso
Efeso Grey



Grigio Londra
London Gray



Nero
Black

Il Fenix è un materiale decisamente innovativo per l'interior design. Ha una superficie estremamente opaca e morbida, che riesce a rigenerarsi da eventuali micro-graffi superficiali. Lo abbiamo scelto anche perché ha una bassa riflessione della luce e colori pastosi e densi.

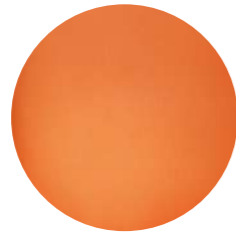
Inoltre, il Fenix contiene cellulosa, che lo rende riutilizzabile come recupero energetico alla fine del suo ciclo di utilizzo.

Fenix is a highly innovative material in interior design. Its ultra-soft, matt surface can "heal" from any superficial micro-scratches. We also chose it for its low light reflectivity and thick, mellow colours.

As an added bonus, Fenix contains cellulose, which means that it can be used for energy at the end of its useful lifespan.



VETRO GLASS



Vetro Soffiato Ambra
Amber Blown Glass



Vetro Soffiato Blu
Blue Gray Blown Glass



Vetro Soffiato Grigio
Smoked Gray Blown Glass



Satinato Bianco
Satin White



Trasparente
Transparent



Grigio Europa
Europe Gray

Erano gli anni '70 quando abbiamo cominciato a sperimentare con il vetro di Murano e, anche se le generazioni sono cambiate, il vetro si soffia come una volta: ci vogliono un maestro vetraio e due polmoni forti. Lavorare al giorno d'oggi con questo materiale è come rivisitare un piatto della tradizione. Gli ingredienti rimangono gli stessi, ma nel sapore trovi qualcosa di nuovo.

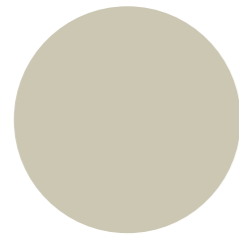
Inseriamo in collezione anche vetri più sobri, come il Grigio Europa, che ha un ottimo controllo della luce e un'ombreggiatura molto decisa.

We first experimented with Murano glass back in the seventies. Generations have come and gone, but the glass is still blown in the same way: it takes a master glassmaker and two strong lungs. Working with this material today is like revisiting a traditional dish: the ingredients are still the same, but you will find something new in the flavour.

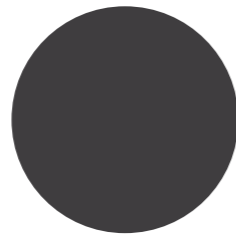
Our collection also includes less conspicuous types of glass, such as European Grey glass, which offers excellent light control and strong shading.



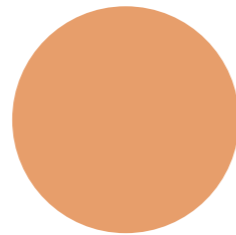
POLIPROPILENE POLYPROPYLENE



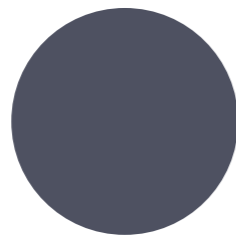
Crigio Seta
Silk Gray
RAL: 7044



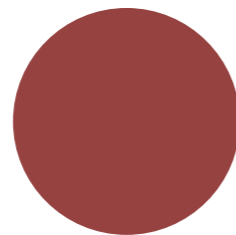
Antracite
Anthracite
RAL: 7016



Albicocca
Apricot
NCS S2030 40R



Blu Intenso
Intense Blue
NCS S-6020 R-80B



Rosso Marsala
Marsala Red
NCS S4040R

Se utilizziamo la plastica nel 2020 è perché è riciclabile. Il polipropilene che iniettiamo nello stampo è al suo primo ciclo di utilizzo e si può impiegare più volte. Abbiamo scelto una pelle dalla mano goffrata ed opaca, che offre sia una buona resistenza che una confortevole esperienza al tatto, amalgamandosi con una palette colore eccentrica, completata da due toni essenziali.

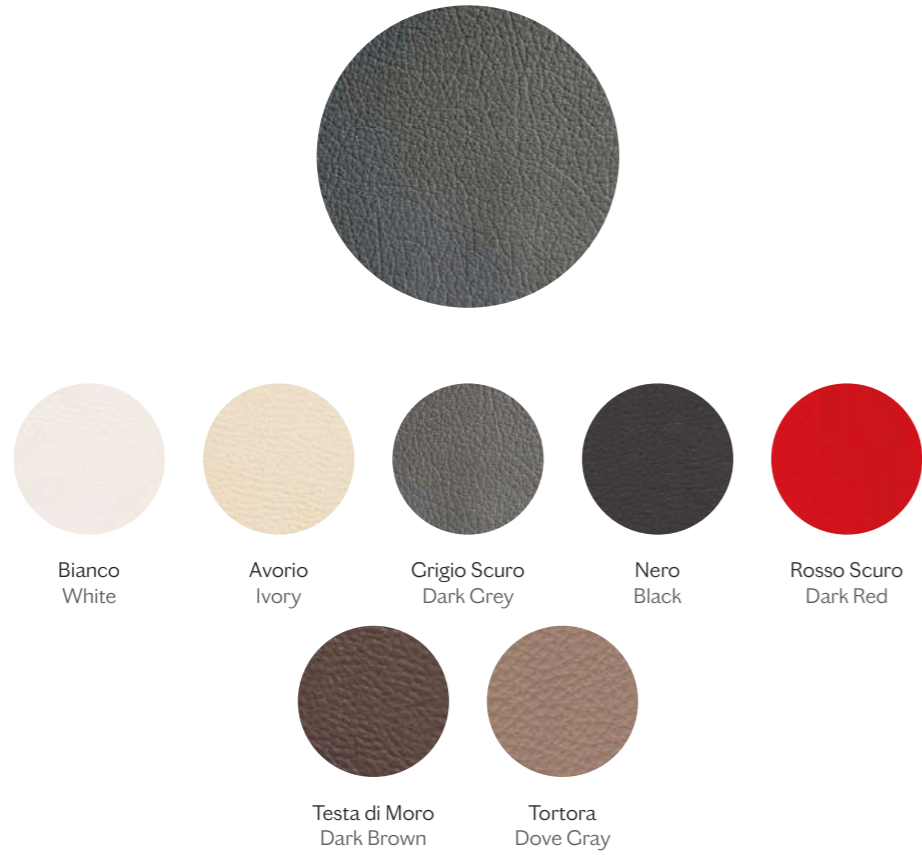
In 2020 we only use plastic if it is recyclable. The polypropylene that we inject into our moulds is on its first use cycle, and can be used several times over. We have chosen an embossed, matt texture, which is both sturdy and pleasant to the touch, in a range of bold, exciting colours, and a couple of more neutral tones to complete the palette.



TESSUTI

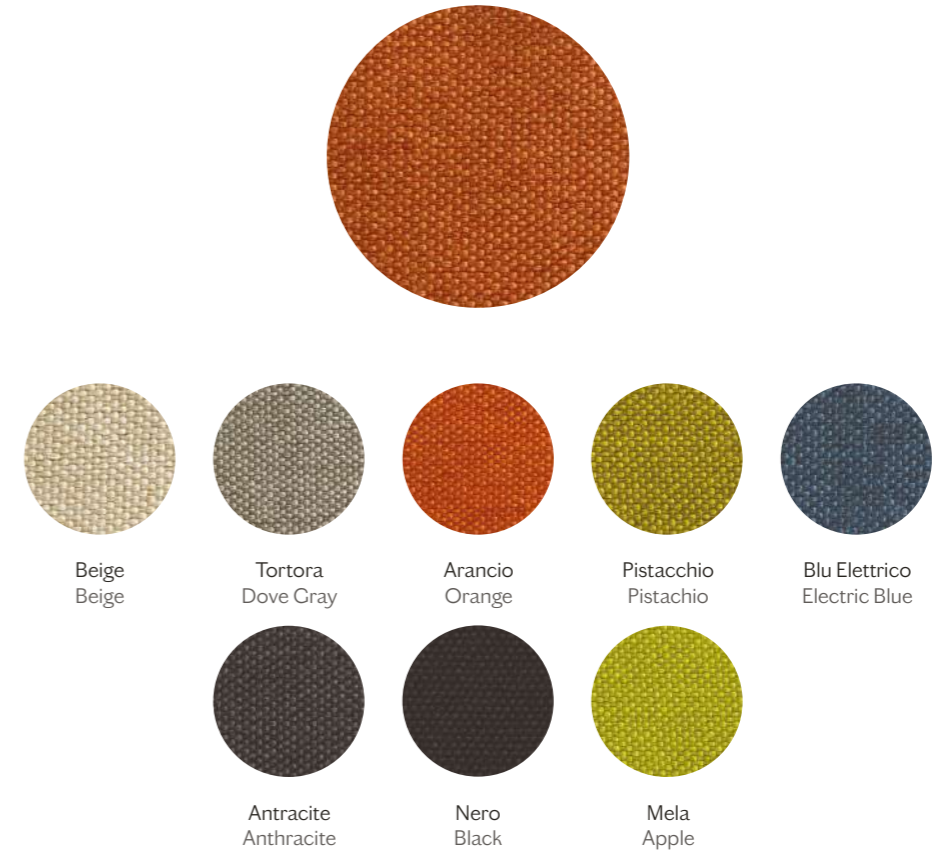
FABRICS

ECOPELLE | ECOLEATHER



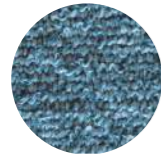
composizione: 30% cotone, 70% poliestere
 composition: 30% cotton, 70% polyester
 durabilità | durability: 50.000 martindale
 peso | weight: 580 gr/m²
 ignifugo | fireproof: no

TRAMÈ



composizione: 100% poliestere | composition: 100% polyester
 durabilità | durability: 100.000 martindale
 peso | weight: 350 gr/m²
 solidità del colore alla luce | color fastness to light: 5
 pilling | pilling: 4
 resistenza allo scorrimento dei fili | seam slippage: warp 2,5, weft 9
 ignifugo | fireproof: BS 5852 source 0
 note: idrorepellente | note: water-repellent

SHOCK



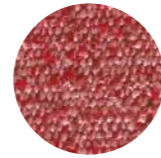
Oltremare
Ultramarine Blue



Nocciola
Nut Brown



Crigio Seta
Silk Grey



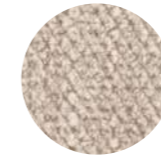
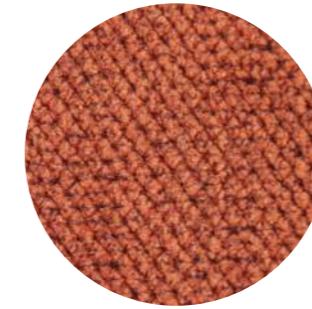
Corallo
Coral



Pietra
Stone Grey

composizione: 100% polipropilene | composition: 100% polypropylene
 durabilità | durability: 50.000 martindale
 peso | weight: 525 gr/m²
 solidità del colore alla luce: 5 (chiari, scuri), 4 (medi)
 color fastness to light: 5 (light, dark), 4 (medium)
 pilling | pilling: 4
 ignifugo | fireproof: no
 note: irrestringibile, resistente a muffe e batteri, non trattiene gli odori,
 100% ecologico e riciclabile | note: no-shrink, mold and bacteria resistant,
 odour not retained, 100% eco-friendly and recyclable

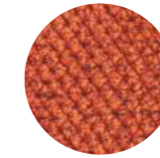
TANIMO



Tortora
Dove Grey



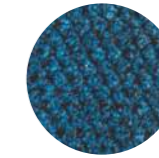
Nocciola
Nut Brown



Mattone
Brick Red



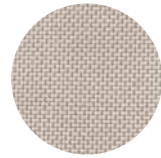
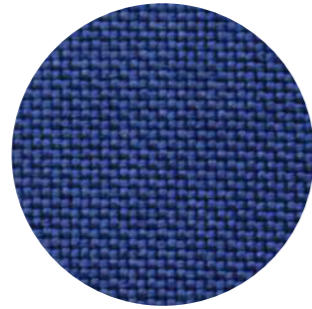
Millennial Pink
Millennial Pink



Oltremare
Ultramarine Blue

composizione: 100% poliestere | composition: 100% polyester
 durabilità | durability: 100.000 martindale
 peso | weight: 575 gr/m²
 solidità del colore alla luce: 3/4 (medi, scuri), 4 (chiari)
 color fastness to light: 3/4 (medium, dark), 4 (light)
 pilling | pilling: 5
 ignifugo | fireproof: no
 note: idrorepellente | note: water-repellent

LOOP



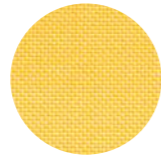
Tortora
Dove Cray



Crigio Piombo
Lead Cray



Blu Notte
Midnight Blue



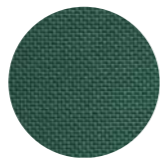
Giallo
Yellow



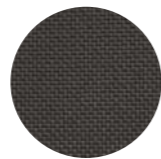
Rosso Bordeaux
Red Bordeaux



Rosso
Red



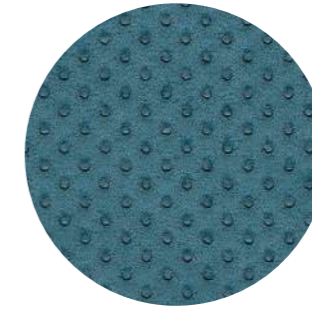
Verde
Green



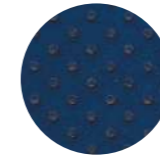
Nero
Black

composizione: 100% poliestere | composition: 100% polyester
 durabilità | durability: 100.000 martindale
 peso | weight: 280 gr/m²
 solidità del colore alla luce | color fastness to light: 5
 pilling | pilling: 5
 ignifugo | fireproof: BS 5852 source 0, DIN EN 1021-1
 note: idrorepellente | note: water-repellent

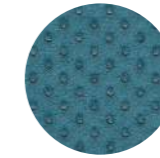
SPONGE



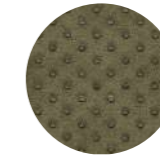
Crigio Chiaro
Light Grey



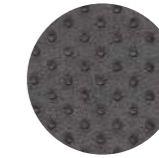
Blu
Blue



Azzurro
Light Blue



Verde
Green



Crigio Scuro
Dark Gray



Arancio
Orange



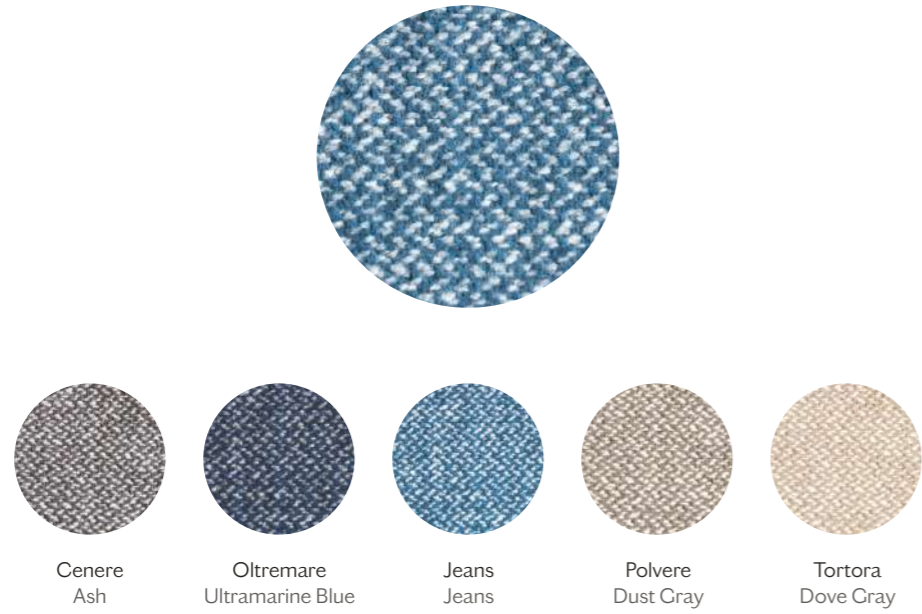
Beige
Beige



Giallo
Yellow

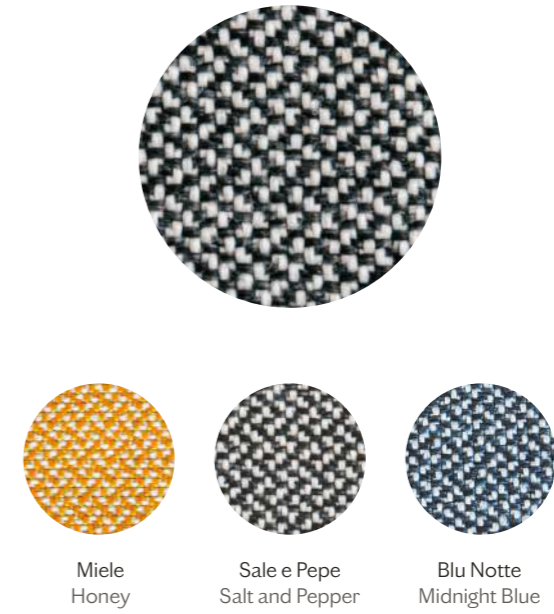
composizione: 100% poliestere | composition: 100% polyester
 durabilità | durability: 30.000 martindale
 peso | weight: 700 gr/m²
 solidità del colore alla luce | color fastness to light: 4
 pilling | pilling: 4/5
 ignifugo | fireproof: no
 note: idrorepellente | note: water-repellent

TWINS



composizione: 75% cotone, 20% acrilico, 5% poliestere
composition: 75% cotton, 20% acrylic, 5% polyester
durabilità | durability: 23.000 martindale
peso | weight: 780 gr/m²
solidità del colore alla luce | color fastness to light: 4
pilling | pilling: 4/5
ignifugo | fireproof: no

ETNA

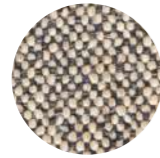


composizione: 100% polipropilene | composition: 100% polypropylene
durabilità | durability: 25.000 martindale
peso | weight: 325 gr/m²
solidità del colore alla luce: 5 (chiari, scuri), 4 (medi)
color fastness to light: 5 (light, dark), 4 (medium)
pilling | pilling: 4
ignifugo | fireproof: class 1 IM BS 5852 part 1 and 2

MODÌ



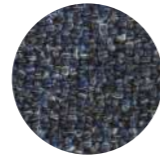
Mandorla
Almond



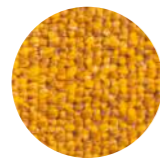
Sale e Pepe
Salt and Pepper



Pietra
Stone Grey



Blu Notte
Midnight Blue



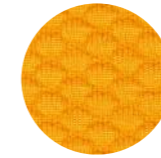
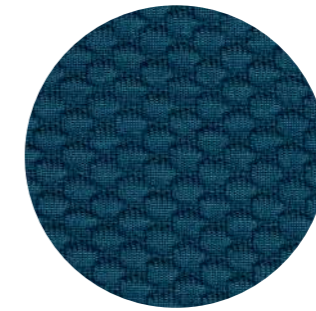
Zafferano
Saffron Yellow



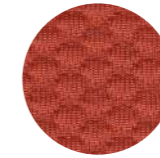
Ciliegia
Cherry

composizione: 80% poliacrilico, 20% YU
 composition: 80% polyacryl, 20% YU
 durabilità | durability: 40.000 martindale
 peso | weight: 530 gr/m²
 solidità' del colore alla luce | color fastness to light: 4
 pilling | pilling: 4
 ignifugo | fireproof: no

MILLENNIAL VISUAL



315



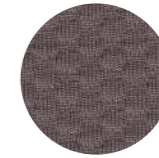
327



328



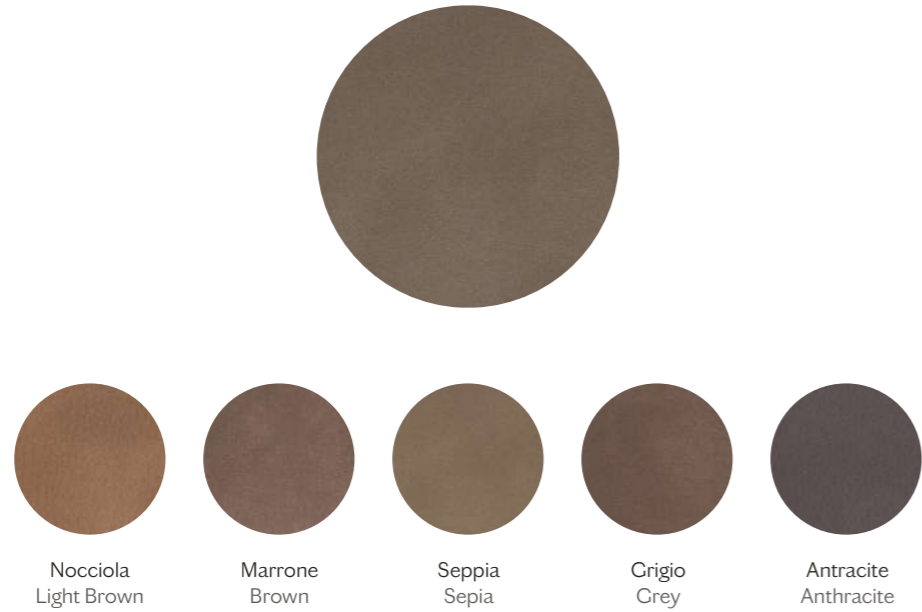
313



319

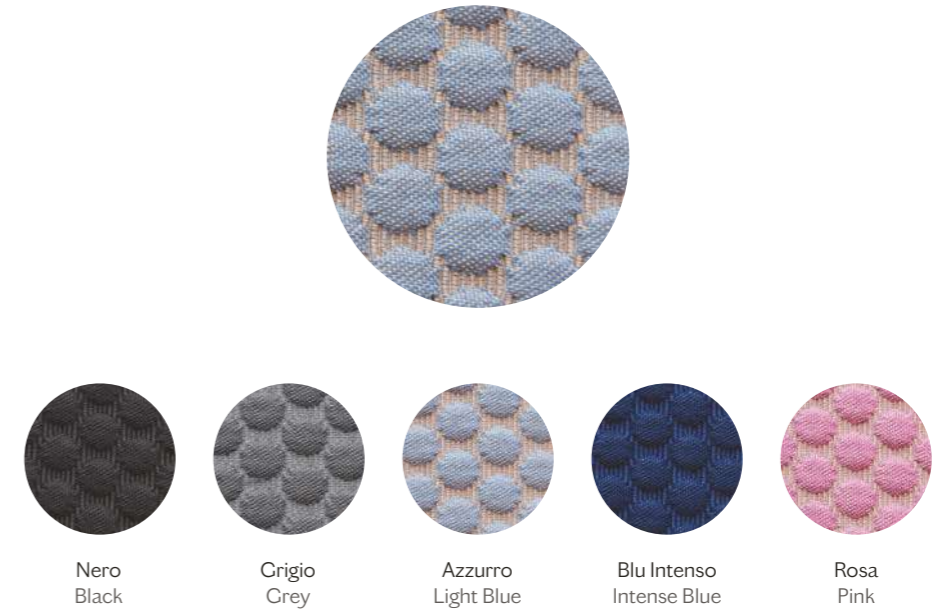
composizione: 100% fibre di poliestere (resistente al fuoco)
 composition: 100% polyester fibres (flamed retardant)
 durabilità | durability: 60.000 martindale
 peso | weight: 440 gr/m²
 solidità' del colore alla luce | color fastness to light: 4/5
 pilling | pilling: 4
 ignifugo | fireproof: DIN 4102-1 B1, BS 5852-1 (source 0 and 1), BS 5852 CRIB5,
 UNI 9175 class IIM, EN 1021-1, EN 1021-2, IMO FTP CODE 2010
 note: resistente alla lacerazione, elastico, fonoassorbente | note: tear strenght,
 elasticity, sound absorbing

ECONABUK



composizione: 68% pvc, 30% fibre di poliestere, 2% poliestere
 composition: 68% pvc, 30% polyester fibres, 2% polyester
 durabilità | durability: 20.000 martindale
 peso | weight: 720 gr/m²
 solidità' del colore alla luce | color fastness to light: 6
 ignifugo | fireproof: UNI 9175: class I IM, BS 5852-1 sch5. part.I,
 BS 5852 CRIB5, EN 1021-2, TB 117:2013

BUBBLE



composizione: 100% fibre di poliestere | composition: 100% polyester fibres
 durabilità | durability: 35.000 martindale
 peso | weight: 420 gr/m²
 solidità' del colore alla luce | color fastness to light: 5/6
 pilling | pilling: 4
 ignifugo | fireproof: BS 5852:2006 (p. 11 CRIB5), EN 1021-1, EN 1021-2,
 UNI 9175:2010 class IIM
 note: resistenza alla lacerazione, non si restringe | note: tear strenght, does not
 shrink

REGAL VELVET



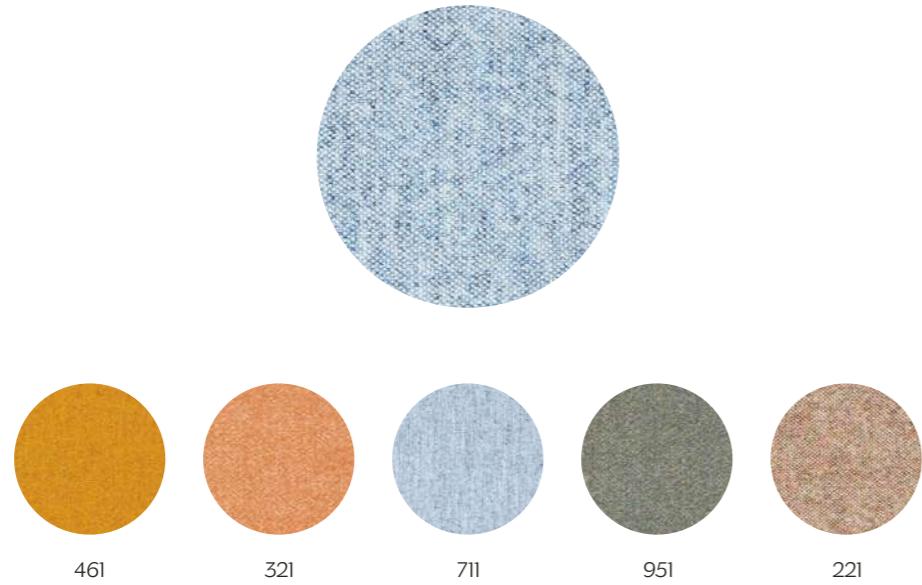
composizione: 100% cotone | composition: 100% cotton
 durabilità | durability: 100.000 martindale
 peso | weight: 650 gr/m²
 ignifugo | fireproof: no

BARNUM



composizione: 45% cotone, 15% lana, 13% acetato, 19% viscosa, 8% nylon
 composition: 45% cotton, 15% wool, 13% acetate, 19% viscose, 8% nylon
 durabilità | durability: 60.000 martindale
 peso | weight: 950 gr/m²
 solidità' del colore alla luce | color fastness to light: 5
 pilling | pilling: 4
 ignifugo | fireproof: BS 5852-1, TB 117:2013

KVADRAT - MELANGE NAP

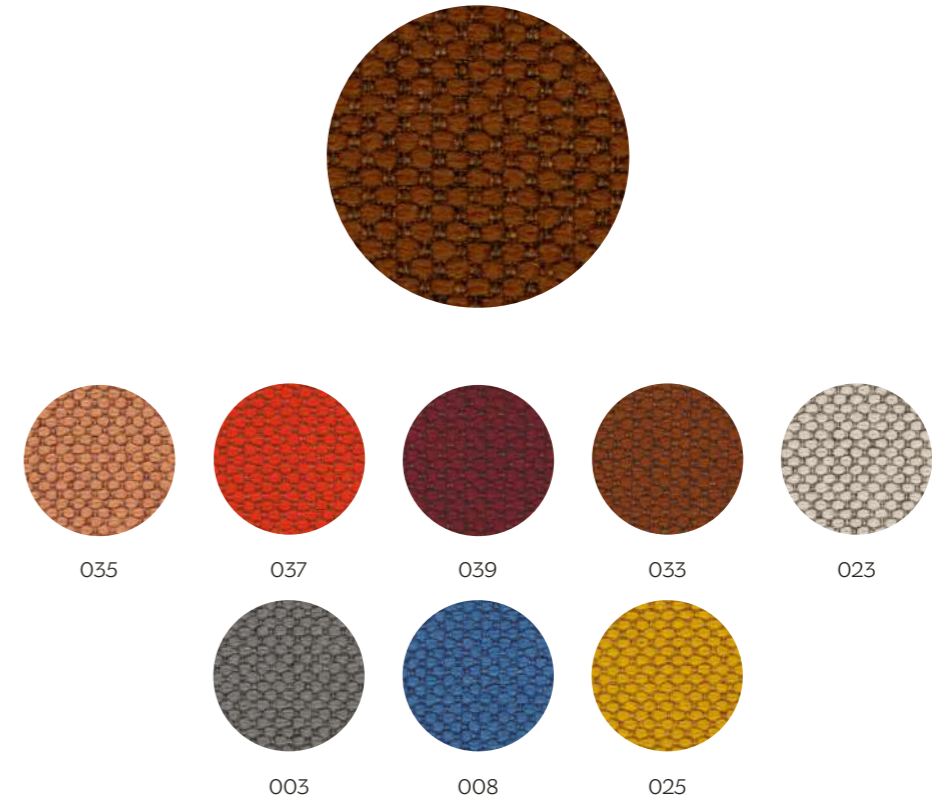


composizione | composition: 97% new wool, 3% nylon
 durabilità | durability: 60.000 Martindale
 peso | weight: 440 gr/m²
 solidità' del colore alla luce | color fastness to light: 6
 pilling | pilling: 3-4

ignifugo | fireproof: BS 5852 CRIB 5, BS 5852 part 1, EN 1021-1/2 classe IIM,
 IMO FTP code 2010: part 8, NF D 60 013, UNI 9175 IIM, US cal. bull. 117-2013

certificazione | certification: EU Ecolabel Certificate, Greenguard Gold,
 Martindale, Lightfastness, Pilling, Sound Absorption and Airflow,
 Enviromental Product Declaration

KVADRAT - MAHARAM MERIT

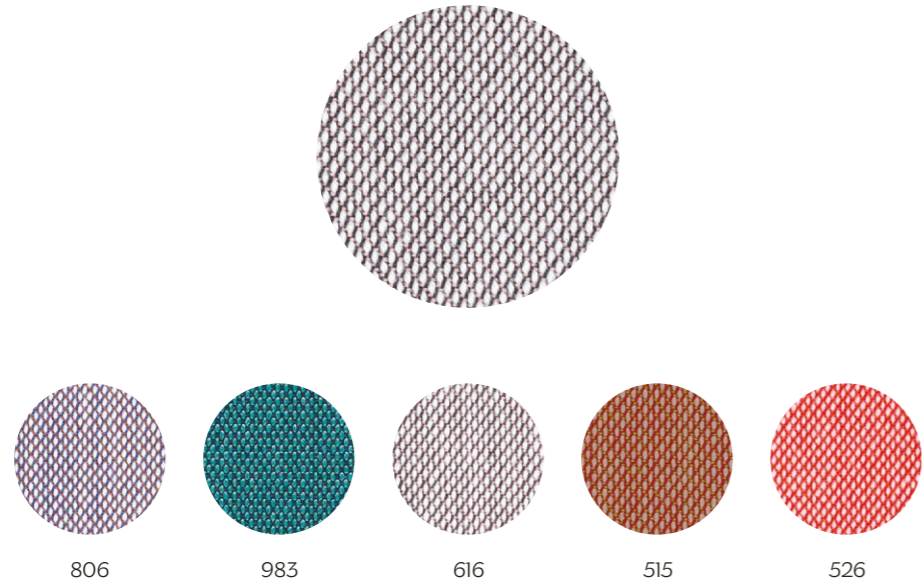


composizione: 76% poliestere riciclato, 24% poliestere
 composition: 76% recycled polyester, 24% polyester
 durabilità | durability: 85.000 martindale
 peso | weight: 500 gr/m²
 solidità' del colore alla luce | color fastness to light: 6-7 (ISO 1-8)
 restringimento | shrinkage: 2%
 pilling | pilling: 4

ignifugo | fireproof: BS 5852 CRIB 5, BS 5852 part 1, EN 1021-1/2, US cal. bull. 117-2013

certificazione | certification: Greenguard, Martindale, Pilling

KVADRAT - STEELCUT TRIO 3



DEDAR - ALUMNUS



composizione: 100% lana, 10% nylon | composition: 90% new wool, 10% nylon
 durabilità | durability: 100.000 martindale
 peso | weight: 770 gr/m²
 solidità del colore alla luce | color fastness to light: 5-7
 pilling | pilling: 4

ignifugo | fireproof: AS/NZS 1530.3, AS/NZS 3837 class 2, BS 5852 CRIB5, BS 5852 part 1, DIN 4102 B2, EN 1021-1/2, IMO FTP code 2010:part 8, NF D 60 013, NFPA 260, önorm B1/Q1, SN 198 898 5.3, UNI 9175 IIM, US cal. bull 117-2013

certificazione | certification: EU Ecolabel Certificate, Greenguard Gold, Martindale, Lightfastness, Pilling, Wool, Sound Absorption and Airflow, Seam Slippage, Environmental Product Declaration

composizione: 100% fibre di poliestere TREVIRA CS
 composition: 100% polyester fibres TREVIRA CS
 peso | weight: 532 g
 ignifugo | fireproof: class IIM

ESEDRA TRICOT



4035-Borbogna
4035-Burgundy
Red



4018-Niagara
4018-Niagara
Blue



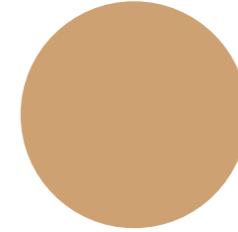
405-Sabbia
405-Sand

composizione: 80% fibre di poliestere (ritardante di fiamma), 20% poliammide
 composition: 80% polyester fibres (flamed retardant), 20% polyamide
 durabilità | durability: 60.000 martindale
 peso | weight: 870 gr/m²
 solidità del colore alla luce | color fastness to light: 4
 pilling | pilling: 4
 ignifugo | fireproof: EN 1021 part. 1-2, UNI 9175: class IIM
 note: elasticità, idrorepellente su richiesta | note: elasticity,
 water-repellent on request

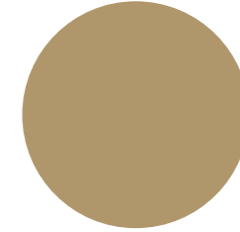
CUOIO | LEATHER



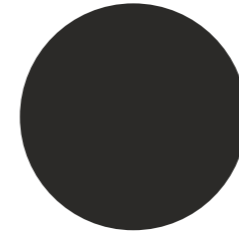
Bianco
White



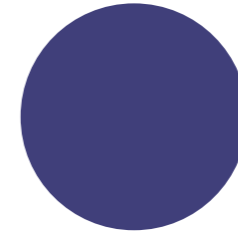
Naturale
Natural



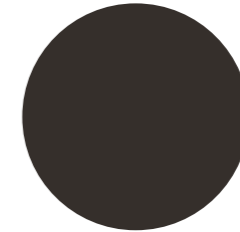
Tortora
Dove Grey



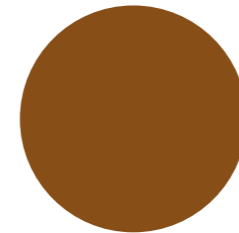
Nero
Black



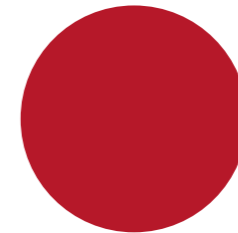
Blu
Blue



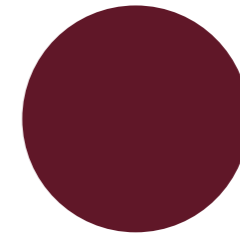
Testa di Moro
Dark Brown



Vegetale
Vegetal



Rosso
Red



Vinaccia
Burgundy Red

Tutte le immagini sono inserite a scopo illustrativo. Le tonalità dei colori e le texture dei materiali fotografati possono essere differenti dalla realtà.

La guida Cura e Manutenzione è disponibile su miniforms.com/download/archive

All images are for illustrative purposes only. Colors and texture of materials can be different from reality.

Care and Maintenance guide is available at miniforms.com/download/archive